

PEBP4 Rabbit pAb

Catalog No.: A14485

Basic Information

Observed MW

26kDa

Calculated MW

26kDa

Category

Primary antibody

Applications

WB,ELISA

Cross-Reactivity

Mouse

Background

The phosphatidylethanolamine (PE)-binding proteins, including PEBP4, are an evolutionarily conserved family of proteins with pivotal biologic functions, such as lipid binding and inhibition of serine proteases (Wang et al., 2004 [PubMed 15302887]).

Recommended Dilutions

WB 1:500 - 1:1000

ELISA Recommended starting concentration is 1 µg/mL. Please optimize the concentration based on your specific assay requirements.

Immunogen Information

Gene ID

157310

Swiss Prot

Q96S96

Immunogen

Recombinant protein (or fragment). This information is considered to be commercially sensitive.

Synonyms

CORK1; CORK-1; PEBP-4; hPEBP4; PRO4408; GWTM1933; HEL-S-300; PEBP4

Contact

☎ | 400-999-6126

✉ | cn.market@abclonal.com.cn

🌐 | www.abclonal.com.cn

Product Information

Source

Rabbit

Isotype

IgG

Purification

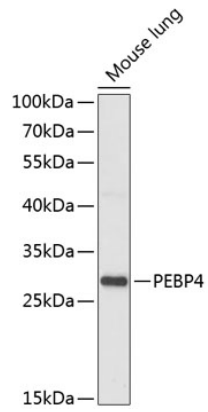
Affinity purification

Storage

Store at -20°C. Avoid freeze / thaw cycles.

Buffer: PBS with 0.01% thimerosal, 50% glycerol, pH7.3.

Validation Data



Western blot analysis of lysates from mouse lung, using PEBP4 Rabbit pAb (A14485) at 1:1000 dilution.
Secondary antibody: HRP-conjugated Goat anti-Rabbit IgG (H+L) (AS014) at 1:10000 dilution.
Lysates/proteins: 25 μ g per lane.
Blocking buffer: 3% nonfat dry milk in TBST.
Detection: ECL Enhanced Kit (RM00021).
Exposure time: 30s.