

NCR1 Rabbit pAb

Catalog No.: A14499 **2 Publications**

Basic Information

Observed MW

34kDa

Calculated MW

34kDa

Category

Primary antibody

Applications

WB, ELISA

Cross-Reactivity

Human, Mouse, Rat

Background

Predicted to be involved in cellular defense response; regulation of natural killer cell mediated cytotoxicity; and signal transduction. Predicted to act upstream of or within defense response to virus and detection of virus. Predicted to be located in cell surface. Predicted to be part of SWI/SNF complex. Predicted to be active in plasma membrane. Biomarker of acquired immunodeficiency syndrome; anogenital venereal wart; hepatitis C; and lymphoproliferative syndrome.

Recommended Dilutions

WB 1:500 - 1:1000

ELISA Recommended starting concentration is 1 µg/mL. Please optimize the concentration based on your specific assay requirements.

Immunogen Information

Gene ID

9437

Swiss Prot

O76036

Immunogen

Recombinant protein (or fragment). This information is considered to be commercially sensitive.

Synonyms

LY94; CD335; NKP46; NK-p46; NCR1

Contact

☎ | 400-999-6126

✉ | cn.market@abclonal.com.cn

🌐 | www.abclonal.com.cn

Product Information

Source

Rabbit

Isotype

IgG

Purification

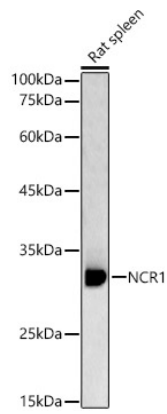
Affinity purification

Storage

Store at -20°C. Avoid freeze / thaw cycles.

Buffer: PBS containing 50% glycerol, preserved with proclin300 or sodium azide (as specified on the Certificate of Analysis), pH 7.3.

Validation Data



Western blot analysis of lysates from Rat spleen, using NCR1 Rabbit pAb (A14499) at 1:1000 dilution.
Secondary antibody: HRP-conjugated Goat anti-Rabbit IgG (H+L) (AS014) at 1:10000 dilution.
Lysates/proteins: 25µg per lane.
Blocking buffer: 3% nonfat dry milk in TBST.
Detection: ECL Basic Kit (RM00020).
Exposure time: 180s.