

RBX1 Rabbit pAb

Catalog No.: A14500

Basic Information

Observed MW

12kDa

Calculated MW

12kDa

Category

Primary antibody

Applications

ELISA, WB

Cross-Reactivity

Mouse, Rat

Background

This locus encodes a RING finger-like domain-containing protein. The encoded protein interacts with cullin proteins and likely plays a role in ubiquitination processes necessary for cell cycle progression. This protein may also affect protein turnover. Related pseudogenes exist on chromosomes 2 and 5.

Recommended Dilutions

WB 1:500 - 1:2000

Immunogen Information

Gene ID

9978

Swiss Prot

P62877

Immunogen

A synthetic peptide corresponding to a sequence within amino acids 1-100 of human RBX1 (NP_055063.1).

Synonyms

ROC1; RNF75; BA554C12.1; RBX1

Contact

☎ | 400-999-6126

✉ | cn.market@abclonal.com.cn

🌐 | www.abclonal.com.cn

Product Information

Source

Rabbit

Isotype

IgG

Purification

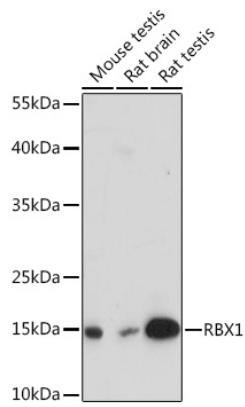
Affinity purification

Storage

Store at -20°C. Avoid freeze / thaw cycles.

Buffer: PBS with 0.01% thimerosal, 50% glycerol, pH7.3.

Validation Data



Western blot analysis of various lysates using RBX1 Rabbit pAb (A14500) at 1:3000 dilution.
Secondary antibody: HRP Goat Anti-Rabbit IgG (H+L) (AS014) at 1:10000 dilution.
Lysates/proteins: 25µg per lane.
Blocking buffer: 3% nonfat dry milk in TBST.
Detection: ECL Enhanced Kit (RM00021).
Exposure time: 90s.