

APOBEC3C Rabbit pAb

Catalog No.: A14510

Basic Information

Observed MW

22kDa

Calculated MW

23kDa

Category

Primary antibody

Applications

ELISA, WB, IF/ICC, IP

Cross-Reactivity

Human

Background

This gene is a member of the cytidine deaminase gene family. It is one of seven related genes or pseudogenes found in a cluster thought to result from gene duplication, on chromosome 22. Members of the cluster encode proteins that are structurally and functionally related to the C to U RNA-editing cytidine deaminase APOBEC1. It is thought that the proteins may be RNA editing enzymes and have roles in growth or cell cycle control.

Recommended Dilutions

WB 1:500 - 1:2000

IF/ICC 1:50 - 1:200

IP 0.5µg-4µg antibody for
200µg-400µg extracts of
whole cells

Immunogen Information

Gene ID

27350

Swiss Prot

Q9NRW3

Immunogen

Recombinant fusion protein containing a sequence corresponding to amino acids 1-190 of human APOBEC3C (NP_055323.2).

Synonyms

A3C; PBI; ARP5; ARDC2; ARDC4; APOBEC1L; bK150C2.3; APOBEC3C

Contact

☎ | 400-999-6126

✉ | cn.market@abclonal.com.cn

🌐 | www.abclonal.com.cn

Product Information

Source

Rabbit

Isotype

IgG

Purification

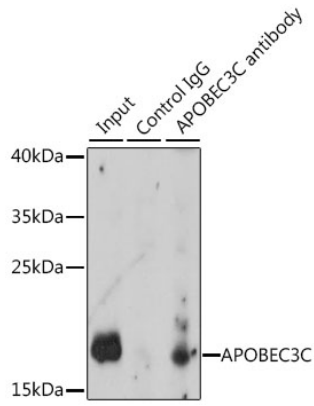
Affinity purification

Storage

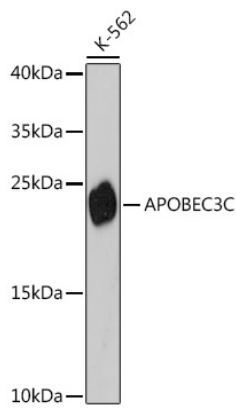
Store at -20°C. Avoid freeze / thaw cycles.

Buffer: PBS with 0.01% thimerosal, 50% glycerol, pH7.3.

Validation Data



Immunoprecipitation analysis of 200 μ g extracts of K-562 cells, using 3 μ g APOBEC3C antibody (A14510). Western blot was performed from the immunoprecipitate using APOBEC3C antibody (A14510) at a dilution of 1:1000.



Western blot analysis of lysates from K-562 cells, using APOBEC3C Rabbit pAb (A14510) at 1:3000 dilution.

Secondary antibody: HRP Goat Anti-Rabbit IgG (H+L) (AS014) at 1:10000 dilution.

Lysates/proteins: 25 μ g per lane.

Blocking buffer: 3% nonfat dry milk in TBST.

Detection: ECL Basic Kit (RM00020).

Exposure time: 90s.