

CALM3 Rabbit pAb

Catalog No.: A14526 **1 Publications**

Basic Information

Observed MW

17kDa

Calculated MW

16kDa

Category

Primary antibody

Applications

ELISA, WB, IHC-P

Cross-Reactivity

Human, Mouse, Rat

Background

This gene encodes a member of a family of proteins that binds calcium and functions as a enzymatic co-factor. Activity of this protein is important in the regulation of the cell cycle and cytokinesis. Multiple alternatively spliced transcript variants have been observed at this gene.

Recommended Dilutions

WB	1:100 - 1:500
IHC-P	1:50 - 1:200

Immunogen Information

Gene ID

808

Swiss Prot

P62158

Immunogen

Recombinant fusion protein containing a sequence corresponding to amino acids 40-140 of human CALM3 (NP_005175.2).

Synonyms

CaM; CALM; CAM1; CAM2; CAMB; PHKD; CPVT6; LQT16; PHKD3; CaMIII; HEL-S-72; CALM3

Contact

 | 400-999-6126

 | cn.market@abclonal.com.cn

 | www.abclonal.com.cn

Product Information

Source

Rabbit

Isotype

IgG

Purification

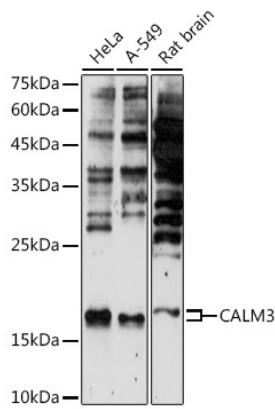
Affinity purification

Storage

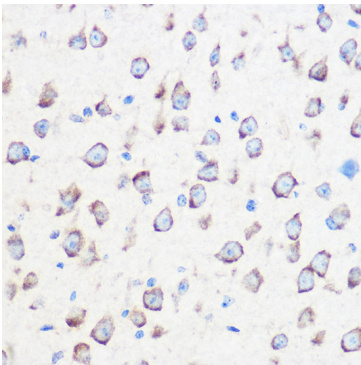
Store at -20°C. Avoid freeze / thaw cycles.

Buffer: PBS with 0.01% thimerosal, 50% glycerol, pH7.3.

Validation Data



Western blot analysis of various lysates using CALM3 Rabbit pAb (A14526) at 1:500 dilution.
Secondary antibody: HRP Goat Anti-Rabbit IgG (H+L) (AS014) at 1:10000 dilution.
Lysates/proteins: 25µg per lane.
Blocking buffer: 3% nonfat dry milk in TBST.
Detection: ECL Enhanced Kit (RM00021).
Exposure time: 180s.



Immunohistochemistry analysis of paraffin-embedded mouse brain using CALM3 Rabbit pAb (A14526) at dilution of 1:100 (40x lens). Perform microwave antigen retrieval with 10 mM Tris/EDTA buffer pH 9.0 before commencing with IHC staining protocol.