

# Cyclin A1 Rabbit pAb

**Catalog No.: A14529**

## Basic Information

**Observed MW**

52kDa

**Calculated MW**

52kDa

**Category**

Primary antibody

**Applications**

ELISA,WB

**Cross-Reactivity**

Mouse, Rat

## Background

The protein encoded by this gene belongs to the highly conserved cyclin family, whose members are characterized by a dramatic periodicity in protein abundance through the cell cycle. Cyclins function as regulators of CDK kinases. Different cyclins exhibit distinct expression and degradation patterns which contribute to the temporal coordination of each mitotic event. The cyclin encoded by this gene was shown to be expressed in testis and brain, as well as in several leukemic cell lines, and is thought to primarily function in the control of the germline meiotic cell cycle. This cyclin binds both CDK2 and CDC2 kinases, which give two distinct kinase activities, one appearing in S phase, the other in G2, and thus regulate separate functions in cell cycle. This cyclin was found to bind to important cell cycle regulators, such as Rb family proteins, transcription factor E2F-1, and the p21 family proteins. Multiple transcript variants encoding different isoforms have been found for this gene.

## Recommended Dilutions

**WB** 1:500 - 1:2000

## Immunogen Information

**Gene ID**

8900

**Swiss Prot**

P78396

**Immunogen**

A synthetic peptide corresponding to a sequence within amino acids 350-450 of human CCNA1 (NP\_001104515.1).

**Synonyms**

CT146; Cyclin A1

## Contact

 | 400-999-6126 | [cn.market@abclonal.com.cn](mailto:cn.market@abclonal.com.cn) | [www.abclonal.com.cn](http://www.abclonal.com.cn)

## Product Information

**Source**

Rabbit

**Isotype**

IgG

**Purification**

Affinity purification

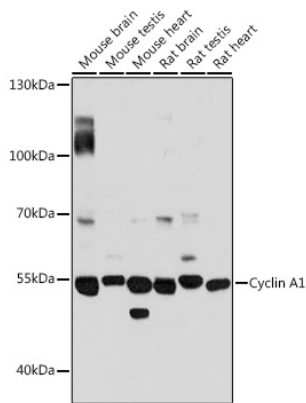
**Storage**

Store at -20°C. Avoid freeze / thaw cycles.

Buffer: PBS with 0.01% thimerosal, 50% glycerol, pH7.3.

## Validation Data

---



Western blot analysis of various lysates using Cyclin A1 Rabbit pAb (A14529) at 1:3000 dilution.  
Secondary antibody: HRP Goat Anti-Rabbit IgG (H+L) (AS014) at 1:10000 dilution.  
Lysates/proteins: 25µg per lane.  
Blocking buffer: 3% nonfat dry milk in TBST.  
Detection: ECL Basic Kit (RM00020).  
Exposure time: 10s.