

[KO Validated] Glutathione Synthetase (GSS) Rabbit pAb

Catalog No.: A14535 **KO Validated** **9 Publications**

Basic Information

Observed MW

52kDa

Calculated MW

52kDa

Category

Primary antibody

Applications

ELISA, WB, IF/ICC

Cross-Reactivity

Human, Mouse, Rat

Background

Glutathione is important for a variety of biological functions, including protection of cells from oxidative damage by free radicals, detoxification of xenobiotics, and membrane transport. The protein encoded by this gene functions as a homodimer to catalyze the second step of glutathione biosynthesis, which is the ATP-dependent conversion of gamma-L-glutamyl-L-cysteine to glutathione. Defects in this gene are a cause of glutathione synthetase deficiency.

Recommended Dilutions

WB 1:500 - 1:2000

IF/ICC 1:50 - 1:200

Immunogen Information

Gene ID

2937

Swiss Prot

P48637

Immunogen

Recombinant fusion protein containing a sequence corresponding to amino acids 373-474 of human Glutathione Synthetase (Glutathione Synthetase (GSS)) (NP_000169.1).

Synonyms

GSHS; HEL-S-64p; HEL-S-88n; S)

Contact

 | 400-999-6126 | cn.market@abclonal.com.cn | www.abclonal.com.cn

Product Information

Source

Rabbit

Isotype

IgG

Purification

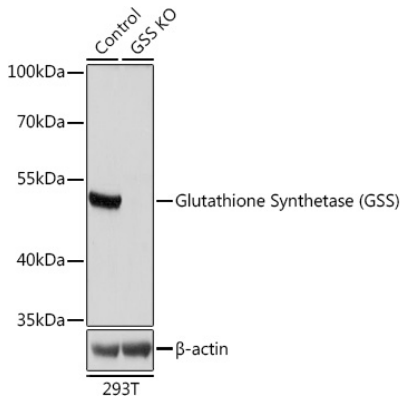
Affinity purification

Storage

Store at -20°C. Avoid freeze / thaw cycles.

Buffer: PBS with 0.01% thimerosal, 50% glycerol, pH7.3.

Validation Data



Western blot analysis of lysates from wild type (WT) and Glutathione Synthetase (Glutathione Synthetase (GSS)) knockout (KO) 293T cells, using [KO Validated] Glutathione Synthetase (GSS) Rabbit pAb (A14535) at 1:1000 dilution.

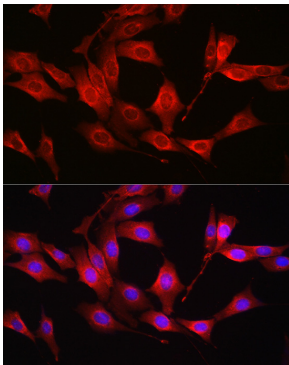
Secondary antibody: HRP Goat Anti-Rabbit IgG (H+L) (AS014) at 1:10000 dilution.

Lysates/proteins: 25µg per lane.

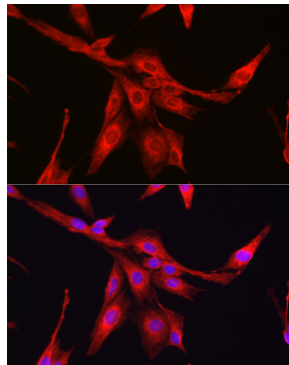
Blocking buffer: 3% nonfat dry milk in TBST.

Detection: ECL Basic Kit (RM00020).

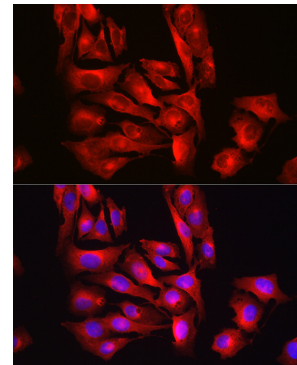
Exposure time: 5s.



Immunofluorescence analysis of NIH/3T3 cells using [KO Validated] Glutathione Synthetase (GSS) Rabbit pAb (A14535) at dilution of 1:100 (40x lens). Secondary antibody: Cy3 Goat Anti-Rabbit IgG (H+L) (AS007) at 1:500 dilution. Blue: DAPI for nuclear staining.



Immunofluorescence analysis of PC-12 cells using [KO Validated] Glutathione Synthetase (GSS) Rabbit pAb (A14535) at dilution of 1:100 (40x lens). Secondary antibody: Cy3 Goat Anti-Rabbit IgG (H+L) (AS007) at 1:500 dilution. Blue: DAPI for nuclear staining.



Immunofluorescence analysis of U2OS cells using [KO Validated] Glutathione Synthetase (GSS) Rabbit pAb (A14535) at dilution of 1:100 (40x lens). Secondary antibody: Cy3 Goat Anti-Rabbit IgG (H+L) (AS007) at 1:500 dilution. Blue: DAPI for nuclear staining.