

CFAP44 Rabbit pAb

Catalog No.: A14539 **3 Publications**

Basic Information

Observed MW

112kDa

Calculated MW

214kDa

Category

Primary antibody

Applications

ELISA, WB

Cross-Reactivity

Human, Mouse

Background

Enables peptidase activity. Involved in sperm axoneme assembly. Acts upstream of or within microtubule cytoskeleton organization. Predicted to be located in cytoplasm; cytoskeleton; and motile cilium. Implicated in spermatogenic failure 20.

Recommended Dilutions

WB 1:500 - 1:2000

Immunogen Information

Gene ID

55779

Swiss Prot

Q96MT7

Immunogen

Recombinant fusion protein containing a sequence corresponding to amino acids 180-370 of human CFAP44 (NP_001157968.1).

Synonyms

WDR52; SPGF20; CFAP44

Contact

 | 400-999-6126

 | cn.market@abclonal.com.cn

 | www.abclonal.com.cn

Product Information

Source

Rabbit

Isotype

IgG

Purification

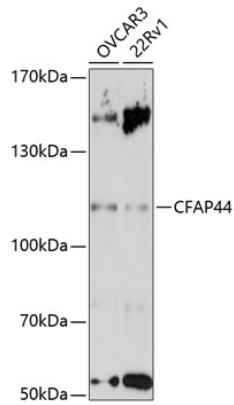
Affinity purification

Storage

Store at -20°C. Avoid freeze / thaw cycles.

Buffer: PBS with 0.01% thimerosal, 50% glycerol, pH7.3.

Validation Data



Western blot analysis of various lysates using CFAP44 Rabbit pAb (A14539) at 1:3000 dilution.
Secondary antibody: HRP Goat Anti-Rabbit IgG (H+L) (AS014) at 1:10000 dilution.
Lysates/proteins: 25µg per lane.
Blocking buffer: 3% nonfat dry milk in TBST.
Detection: ECL Enhanced Kit (RM00021).
Exposure time: 90s.