

MYCT1 Rabbit pAb

Catalog No.: A14541 **1 Publications**

Basic Information

Observed MW

27kDa

Calculated MW

27kDa

Category

Primary antibody

Applications

ELISA, WB, IF/ICC

Cross-Reactivity

Human, Mouse, Rat

Background

Predicted to act upstream of or within hematopoietic stem cell homeostasis. Located in nucleoplasm.

Recommended Dilutions

| | |
|---------------|----------------|
| WB | 1:500 - 1:2000 |
| IF/ICC | 1:50 - 1:200 |

Immunogen Information

Gene ID

80177

Swiss Prot

Q8N699

Immunogen

Recombinant fusion protein containing a sequence corresponding to amino acids 99-235 of human MYCT1 (NP_079383.2).

Synonyms

MTLC; MYCT1

Contact

 | 400-999-6126

 | cn.market@abclonal.com.cn

 | www.abclonal.com.cn

Product Information

Source

Rabbit

Isotype

IgG

Purification

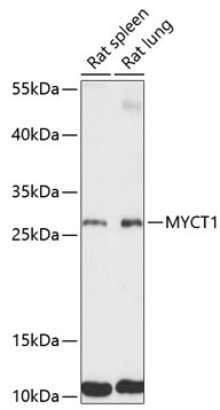
Affinity purification

Storage

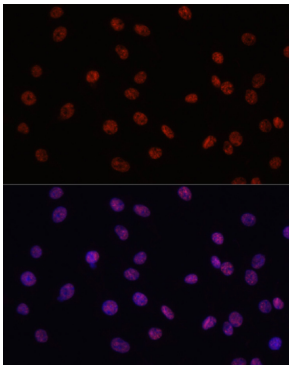
Store at -20°C. Avoid freeze / thaw cycles.

Buffer: PBS with 0.01% thimerosal, 50% glycerol, pH7.3.

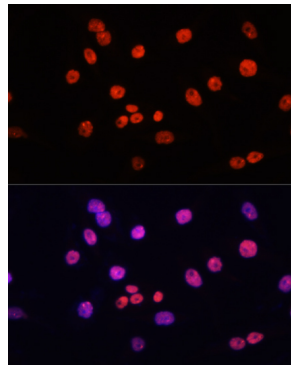
Validation Data



Western blot analysis of various lysates using MYCT1 Rabbit pAb (A14541) at 1:3000 dilution.
Secondary antibody: HRP Goat Anti-Rabbit IgG (H+L) (AS014) at 1:10000 dilution.
Lysates/proteins: 25 μ g per lane.
Blocking buffer: 3% nonfat dry milk in TBST.
Detection: ECL Basic Kit (RM00020).
Exposure time: 90s.



Immunofluorescence analysis of C6 cells using MYCT1 Rabbit pAb (A14541) at dilution of 1:100. Blue: DAPI for nuclear staining.



Immunofluorescence analysis of HeLa cells using MYCT1 Rabbit pAb (A14541) at dilution of 1:100. Blue: DAPI for nuclear staining.