

ASH2L Rabbit pAb

Catalog No.: A14543 **1 Publications**

Basic Information

Observed MW

69kDa

Calculated MW

69kDa

Category

Primary antibody

Applications

ELISA, WB

Cross-Reactivity

Human

Background

Enables beta-catenin binding activity and transcription cis-regulatory region binding activity. Contributes to histone methyltransferase activity (H3-K4 specific). Involved in histone H3-K4 methylation; positive regulation of cell population proliferation; and response to estrogen. Acts upstream of or within cellular response to DNA damage stimulus. Located in nucleus. Part of MLL3/4 complex and Set1C/COMPASS complex.

Recommended Dilutions

WB 1:500 - 1:2000

Immunogen Information

Gene ID

9070

Swiss Prot

Q9UBL3

Immunogen

Recombinant fusion protein containing a sequence corresponding to amino acids 81-280 of human ASH2L (NP_001098684.1).

Synonyms

ASH2; Bre2; ASH2L1; ASH2L2; ASH2L

Contact

☎ | 400-999-6126

✉ | cn.market@abclonal.com.cn

🌐 | www.abclonal.com.cn

Product Information

Source

Rabbit

Isotype

IgG

Purification

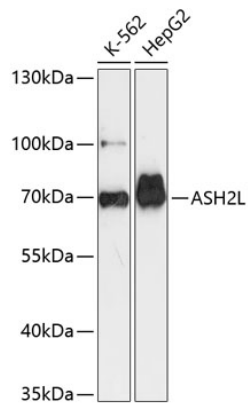
Affinity purification

Storage

Store at -20°C. Avoid freeze / thaw cycles.

Buffer: PBS with 0.01% thimerosal, 50% glycerol, pH7.3.

Validation Data



Western blot analysis of various lysates using ASH2L Rabbit pAb (A14543) at 1:3000 dilution.
Secondary antibody: HRP Goat Anti-Rabbit IgG (H+L) (AS014) at 1:10000 dilution.
Lysates/proteins: 25µg per lane.
Blocking buffer: 3% nonfat dry milk in TBST.
Detection: ECL Basic Kit (RM00020).
Exposure time: 90s.