

TOMM22 Rabbit pAb

Catalog No.: A14548

Basic Information

Observed MW

16kDa

Calculated MW

16kDa

Category

Primary antibody

Applications

ELISA, WB

Cross-Reactivity

Human

Background

The protein encoded by this gene is an integral membrane protein of the mitochondrial outer membrane. The encoded protein interacts with TOMM20 and TOMM40, and forms a complex with several other proteins to import cytosolic preproteins into the mitochondrion.

Recommended Dilutions

WB 1:500 - 1:2000

Immunogen Information

Gene ID

56993

Swiss Prot

Q9NS69

Immunogen

Recombinant fusion protein containing a sequence corresponding to amino acids 1-83 of human TOMM22 (NP_064628.1).

Synonyms

1C9-2; TOM22; MST065; MSTP065; TOMM22

Contact

☎ | 400-999-6126

✉ | cn.market@abclonal.com.cn

🌐 | www.abclonal.com.cn

Product Information

Source

Rabbit

Isotype

IgG

Purification

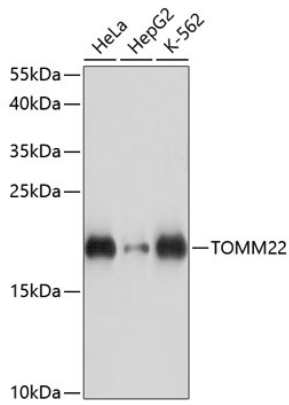
Affinity purification

Storage

Store at -20°C. Avoid freeze / thaw cycles.

Buffer: PBS with 0.01% thimerosal, 50% glycerol, pH7.3.

Validation Data



Western blot analysis of various lysates using TOMM22 Rabbit pAb (A14548) at 1:3000 dilution.
Secondary antibody: HRP Goat Anti-Rabbit IgG (H+L) (AS014) at 1:10000 dilution.
Lysates/proteins: 25 μ g per lane.
Blocking buffer: 3% nonfat dry milk in TBST.
Detection: ECL Basic Kit (RM00020).
Exposure time: 10s.