

SAA1 Rabbit pAb

Catalog No.: A14553 **2 Publications**

Basic Information

Observed MW

16 kDa

Calculated MW

12 kDa

Category

Primary antibody

Applications

WB, ELISA

Cross-Reactivity

Human, Mouse, Rat

Background

This gene encodes a member of the serum amyloid A family of apolipoproteins. The encoded preproprotein is proteolytically processed to generate the mature protein. This protein is a major acute phase protein that is highly expressed in response to inflammation and tissue injury. This protein also plays an important role in HDL metabolism and cholesterol homeostasis. High levels of this protein are associated with chronic inflammatory diseases including atherosclerosis, rheumatoid arthritis, Alzheimer's disease and Crohn's disease. This protein may also be a potential biomarker for certain tumors. Finally, antimicrobial activity against *S. aureus* and *E. coli* resides in the N-terminal portion of the mature protein. Alternate splicing results in multiple transcript variants that encode the same protein. A pseudogene of this gene is found on chromosome 11.

Recommended Dilutions

WB 1:500 - 1:2000

ELISA Recommended starting concentration is 1 µg/mL. Please optimize the concentration based on your specific assay requirements.

For high-ratio antibody dilutions (≥1:10000) a sequential dilution method is strongly recommended to ensure measurement accuracy.

Immunogen Information

Gene ID

6288

Swiss Prot

P0DJJ8

Immunogen

Synthetic peptide. This information is considered to be commercially sensitive.

Synonyms

SAA; PIG4; SAA2; TP53I4; SAA1

Product Information

Source

Rabbit

Isotype

IgG

Purification

Affinity purification

Storage

Store at -20°C. Avoid freeze / thaw cycles.

Buffer: PBS with 0.09% Sodium azide, 50% glycerol, pH7.3.

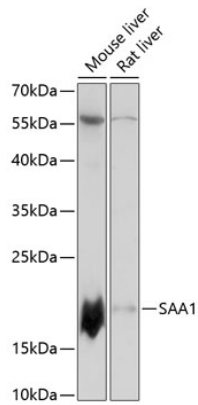
Contact

 | 400-999-6126

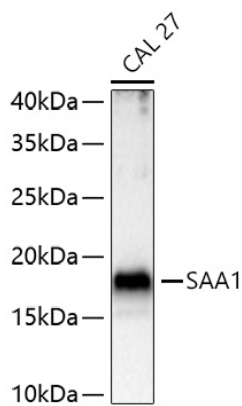
 | cn.market@abclonal.com.cn

 | www.abclonal.com.cn

Validation Data



Western blot analysis of various lysates using SAA1 Rabbit pAb (A14553) at 1:3000 dilution.
Secondary antibody: HRP-conjugated Goat anti-Rabbit IgG (H+L) (AS014) at 1:10000 dilution.
Lysates/proteins: 25µg per lane.
Blocking buffer: 3% nonfat dry milk in TBST.
Detection: ECL Basic Kit (RM00020).
Exposure time: 30s.



Western blot analysis of lysates from CAL 27 cells using SAA1 Rabbit pAb (A14553) at 1:1000 dilution incubated overnight at 4°C.
Secondary antibody: HRP-conjugated Goat anti-Rabbit IgG (H+L) (AS014) at 1:10000 dilution.
Lysates/proteins: 25 µg per lane.
Blocking buffer: 3% nonfat dry milk in TBST.
Detection: ECL Basic Kit (RM00020).
Exposure time: 60 s.