

CXCL10/IP-10 Rabbit pAb

Catalog No.: A1457 **3 Publications**

Basic Information

Observed MW

11kDa

Calculated MW

11kDa

Category

Primary antibody

Applications

WB,(ELISA)

Cross-Reactivity

Human

Background

This antimicrobial gene encodes a chemokine of the CXC subfamily and ligand for the receptor CXCR3. Binding of this protein to CXCR3 results in pleiotropic effects, including stimulation of monocytes, natural killer and T-cell migration, and modulation of adhesion molecule expression. This gene may also be a key regulator of the 'cytokine storm' immune response to SARS-CoV-2 infection.

Recommended Dilutions

WB 1:500 - 1:2000

ELISA Recommended starting concentration is 1 µg/mL. Please optimize the concentration based on your specific assay requirements.

Immunogen Information

Gene ID

3627

Swiss Prot

P02778

Immunogen

Recombinant fusion protein containing a sequence corresponding to amino acids 20-98 of human CXCL10/IP-10 (NP_001556.2).

Synonyms

C7; IFI10; INP10; IP-10; crg-2; mob-1; SCYB10; gIP-10; CXCL10/IP-10

Contact

☎ | 400-999-6126

✉ | cn.market@abclonal.com.cn

🌐 | www.abclonal.com.cn

Product Information

Source

Rabbit

Isotype

IgG

Purification

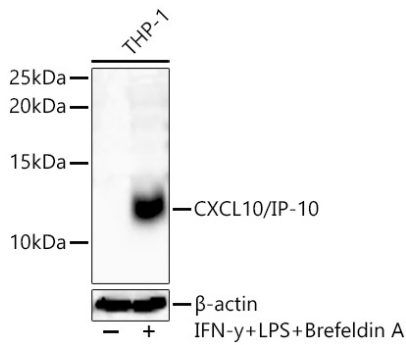
Affinity purification

Storage

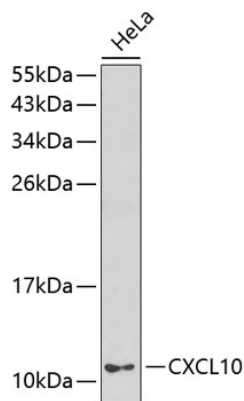
Store at -20°C. Avoid freeze / thaw cycles.

Buffer: PBS with 0.05% proclin300,50% glycerol,pH7.3.

Validation Data



Western blot analysis of lysates from THP-1 cells using CXCL10/IP-10 Rabbit pAb (A1457) at 1:2000 dilution incubated overnight at 4°C. THP-1 cells were treated by IFN- γ (200ng/ml) at 37°C for 24 hours, LPS (50ng/ml) at 37°C for 24 hours and BFA (5ug/ml) at 37°C for 21 hours. Secondary antibody: HRP-conjugated Goat anti-Rabbit IgG (H+L) (AS014) at 1:10000 dilution. Lysates/proteins: 30 μ g per lane. Blocking buffer: 3 % nonfat dry milk in TBST. Detection: ECL Basic Kit (RM00020). Exposure time: 20s.



Western blot analysis of lysates from HeLa cells, using CXCL10/IP-10 Rabbit pAb (A1457). Secondary antibody: HRP-conjugated Goat anti-Rabbit IgG (H+L) (AS014) at 1:10000 dilution. Lysates/proteins: 25 μ g per lane. Blocking buffer: 3% nonfat dry milk in TBST.