

KLHL1 Rabbit pAb

Catalog No.: A14594

Basic Information

Observed MW

83kDa

Calculated MW

83kDa

Category

Primary antibody

Applications

ELISA, WB

Cross-Reactivity

Human

Background

The KLHL1 protein belongs to a family of actin-organizing proteins related to Drosophila Kelch (Nemes et al., 2000 [PubMed 10888605]).

Recommended Dilutions

WB 1:500 - 1:2000

Immunogen Information

Gene ID

57626

Swiss Prot

Q9NR64

Immunogen

Recombinant fusion protein containing a sequence corresponding to amino acids 1-210 of human KLHL1 (NP_065917.1).

Synonyms

MRP2; KLHL1

Contact

 | 400-999-6126

 | cn.market@abclonal.com.cn

 | www.abclonal.com.cn

Product Information

Source

Rabbit

Isotype

IgG

Purification

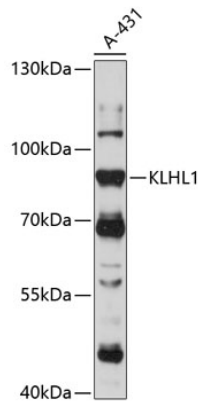
Affinity purification

Storage

Store at -20°C. Avoid freeze / thaw cycles.

Buffer: PBS with 0.01% thimerosal, 50% glycerol, pH7.3.

Validation Data



Western blot analysis of lysates from A-431 cells, using KLHL1 Rabbit pAb (A14594) at 1:1000 dilution.
Secondary antibody: HRP Goat Anti-Rabbit IgG (H+L) (AS014) at 1:10000 dilution.
Lysates/proteins: 25µg per lane.
Blocking buffer: 3% nonfat dry milk in TBST.
Detection: ECL Basic Kit (RM00020).
Exposure time: 30s.