

ABCG4 Rabbit pAb

Catalog No.: A14596 **1 Publications**

Basic Information

Observed MW

72kDa

Calculated MW

72kDa

Category

Primary antibody

Applications

ELISA, WB

Cross-Reactivity

Human, Mouse, Rat

Background

The protein encoded by this gene is a member of the ATP-binding cassette (ABC) transporter superfamily. ABC proteins transport various molecules across extra- and intra-cellular membranes. ABC genes are divided into seven distinct subfamilies (ABC1, MDR/TAP, MRP, ALD, OABP, GCN20, White). The encoded protein is a member of the White subfamily and plays an important role in cellular cholesterol homeostasis. This protein functions as either a homodimer or as a heterodimer with another ABC subfamily protein such as ABCG1.

Recommended Dilutions

WB 1:500 - 1:2000

Immunogen Information

Gene ID

64137

Swiss Prot

Q9H172

Immunogen

Recombinant fusion protein containing a sequence corresponding to amino acids 270-370 of human ABCG4 (NP_071452.2).

Synonyms

WHITE2; ABCG4

Contact

☎ | 400-999-6126

✉ | cn.market@abclonal.com.cn

🌐 | www.abclonal.com.cn

Product Information

Source

Rabbit

Isotype

IgG

Purification

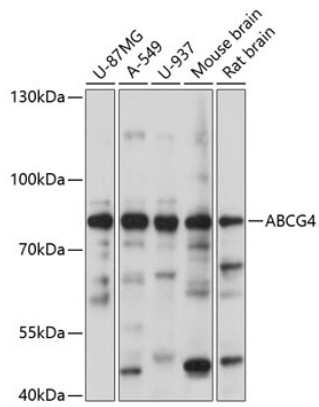
Affinity purification

Storage

Store at -20°C. Avoid freeze / thaw cycles.

Buffer: PBS with 0.01% thimerosal, 50% glycerol, pH7.3.

Validation Data



Western blot analysis of various lysates using ABCG4 Rabbit pAb (A14596) at 1:1000 dilution.
Secondary antibody: HRP Goat Anti-Rabbit IgG (H+L) (AS014) at 1:10000 dilution.
Lysates/proteins: 25µg per lane.
Blocking buffer: 3% nonfat dry milk in TBST.
Detection: ECL Basic Kit (RM00020).
Exposure time: 5s.