

RFPL2 Rabbit pAb

Catalog No.: A14604

Basic Information

Observed MW

42kDa

Calculated MW

42kDa

Category

Primary antibody

Applications

ELISA, WB

Cross-Reactivity

Human, Rat

Background

Predicted to enable ubiquitin-protein transferase activity. Predicted to be involved in positive regulation of transcription, DNA-templated. Predicted to be active in chromatin and nucleoplasm.

Recommended Dilutions

WB 1:500 - 1:2000

Immunogen Information

Gene ID

10739

Swiss Prot

O75678

Immunogen

A synthetic peptide corresponding to a sequence within amino acids 50-150 of human RFPL2 (NP_006596.2).

Synonyms

RNF79; RFPL2

Contact

 | 400-999-6126

 | cn.market@abclonal.com.cn

 | www.abclonal.com.cn

Product Information

Source

Rabbit

Isotype

IgG

Purification

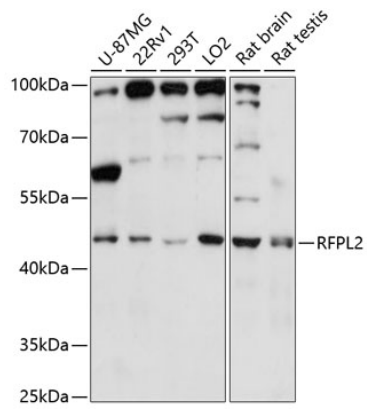
Affinity purification

Storage

Store at -20°C. Avoid freeze / thaw cycles.

Buffer: PBS with 0.01% thimerosal, 50% glycerol, pH7.3.

Validation Data



Western blot analysis of various lysates using RFPL2 Rabbit pAb (A14604) at 1:3000 dilution.
Secondary antibody: HRP Goat Anti-Rabbit IgG (H+L) (AS014) at 1:10000 dilution.
Lysates/proteins: 25µg per lane.
Blocking buffer: 3% nonfat dry milk in TBST.
Detection: ECL Enhanced Kit (RM00021).
Exposure time: 30s.