

RYBP Rabbit pAb

Catalog No.: A14605

Basic Information

Observed MW

33kDa

Calculated MW

25kDa

Category

Primary antibody

Applications

ELISA, WB

Cross-Reactivity

Mouse, Rat

Background

Predicted to enable DNA binding activity and transcription coregulator activity. Involved in several processes, including histone H2A monoubiquitination; negative regulation of proteasomal ubiquitin-dependent protein catabolic process; and positive regulation of transcription, DNA-templated. Located in nucleoplasm. Colocalizes with PcG protein complex.

Recommended Dilutions

WB 1:500 - 1:2000

Immunogen Information

Gene ID

23429

Swiss Prot

Q8N488

Immunogen

A synthetic peptide corresponding to a sequence within amino acids 100 to the C-terminus of human RYBP (NP_036366.3).

Synonyms

AAP1; DEDAF; YEAF1; APAP-1; RYBP

Contact

 | 400-999-6126

 | cn.market@abclonal.com.cn

 | www.abclonal.com.cn

Product Information

Source

Rabbit

Isotype

IgG

Purification

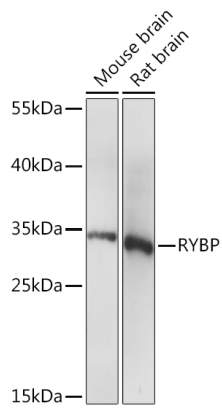
Affinity purification

Storage

Store at -20°C. Avoid freeze / thaw cycles.

Buffer: PBS with 0.01% thimerosal, 50% glycerol, pH 7.3.

Validation Data



Western blot analysis of various lysates using RYBP Rabbit pAb (A14605) at 1:1000 dilution.
Secondary antibody: HRP Goat Anti-Rabbit IgG (H+L) (AS014) at 1:10000 dilution.
Lysates/proteins: 25 μ g per lane.
Blocking buffer: 3% nonfat dry milk in TBST.
Detection: ECL Basic Kit (RM00020).
Exposure time: 10s.