

# SLC2A9 Rabbit pAb

Catalog No.: A14606 **1 Publications**

## Basic Information

### Observed MW

56-60kDa

### Calculated MW

59kDa

### Category

Primary antibody

### Applications

ELISA, WB

### Cross-Reactivity

Mouse, Rat

## Background

This gene encodes a member of the SLC2A facilitative glucose transporter family. Members of this family play a significant role in maintaining glucose homeostasis. The encoded protein may play a role in the development and survival of chondrocytes in cartilage matrices. Two transcript variants encoding distinct isoforms have been identified for this gene.

## Recommended Dilutions

WB 1:1000 - 1:5000

## Immunogen Information

### Gene ID

56606

### Swiss Prot

Q9NRM0

### Immunogen

A synthetic peptide corresponding to a sequence within amino acids 429-529 of human SLC2A9 (NP\_064425.2).

### Synonyms

GLUT9; GLUTX; UAQTL2; URATv1; SLC2A9

## Contact

☎ | 400-999-6126

✉ | [cn.market@abclonal.com.cn](mailto:cn.market@abclonal.com.cn)

🌐 | [www.abclonal.com.cn](http://www.abclonal.com.cn)

## Product Information

### Source

Rabbit

### Isotype

IgG

### Purification

Affinity purification

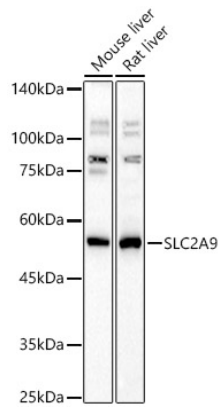
### Storage

Store at -20°C. Avoid freeze / thaw cycles.

Buffer: PBS with 0.01% thimerosal, 50% glycerol, pH7.3.

## Validation Data

---



Western blot analysis of various lysates, using SLC2A9 Rabbit pAb (A14606) at 1:2000 dilution.  
Secondary antibody: HRP Goat Anti-Rabbit IgG (H+L) (AS014) at 1:10000 dilution.  
Lysates/proteins: 25µg per lane.  
Blocking buffer: 3% nonfat dry milk in TBST.  
Detection: ECL Basic Kit (RM00020).  
Exposure time: 30s.