

SLR1 Rabbit pAb

Catalog No.: A14614 **2 Publications**

Basic Information

Observed MW

65.4kDa

Calculated MW

65kDa

Category

Primary antibody

Applications

ELISA, WB

Cross-Reactivity

Oryza sativa

Background

Probable transcriptional regulator that acts as a repressor of the gibberellin (GA) signaling pathway. Probably acts by participating in large multiprotein complexes that repress transcription of GA-inducible genes. Upon GA application, it is degraded by the proteasome, allowing the GA signaling pathway. In contrast, its overexpression prevents the GA signaling pathway and induces a dwarf phenotype.

Recommended Dilutions

WB 1:500 - 1:2000

Immunogen Information

Gene ID

4333860

Swiss Prot

Immunogen

Recombinant protein of Oryza sativa SLR1

Synonyms

GAI; SLR1; OsGAI; OsJ_12286

Contact

 | 400-999-6126

 | cn.market@abclonal.com.cn

 | www.abclonal.com.cn

Product Information

Source

Rabbit

Isotype

IgG

Purification

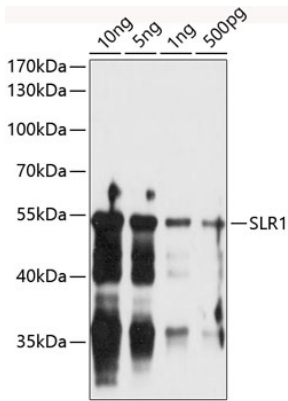
Affinity purification

Storage

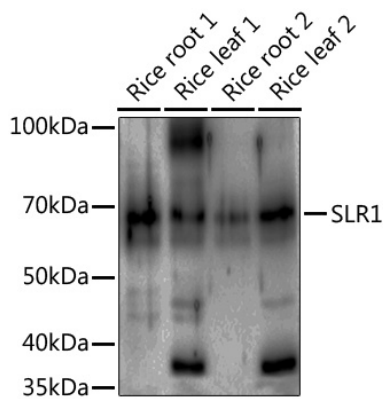
Store at -20°C. Avoid freeze / thaw cycles.

Buffer: PBS with 0.01% thimerosal, 50% glycerol, pH7.3.

Validation Data



Western blot analysis of recombinant *Oryza sativa* SLR1 protein using SLR1 Rabbit pAb (A14614).
Secondary antibody: HRP Goat Anti-Rabbit IgG (H+L) (AS014) at 1:10000 dilution.
Lysates/proteins: 10ng/5ng/1ng/500pg per lane.
Blocking buffer: 3% nonfat dry milk in TBST.
Detection: ECL Basic Kit (RM00020).
Exposure time: 60s.



Western blot analysis of various lysates using SLR1 Rabbit pAb (A14614) at 1:1000 dilution.
Secondary antibody: HRP Goat Anti-Rabbit IgG (H+L) (AS014) at 1:8000 dilution.
Lysates/proteins: 25µg per lane.
Blocking buffer: 3% nonfat dry milk in TBST.
Detection: ECL Basic Kit (RM00020).
Exposure time: 60s.