

# MYH13 Rabbit pAb

Catalog No.: A14620

## Basic Information

### Observed MW

250kDa

### Calculated MW

224kDa

### Category

Primary antibody

### Applications

ELISA, WB, IF/ICC

### Cross-Reactivity

Mouse, Rat

## Background

Predicted to enable microfilament motor activity. Predicted to be involved in muscle contraction. Predicted to act upstream of or within cellular response to starvation. Located in extracellular exosome.

## Recommended Dilutions

WB	1:500 - 1:2000
IF/ICC	1:50 - 1:100

## Immunogen Information

### Gene ID

8735

### Swiss Prot

Q9UKX3

### Immunogen

Recombinant fusion protein containing a sequence corresponding to amino acids 1240-1320 of human MYH13 (NP\_003793.2).

### Synonyms

MyHC-eo; MyHC-III; MYH13

## Contact

☎ | 400-999-6126

✉ | [cn.market@abclonal.com.cn](mailto:cn.market@abclonal.com.cn)

🌐 | [www.abclonal.com.cn](http://www.abclonal.com.cn)

## Product Information

### Source

Rabbit

### Isotype

IgG

### Purification

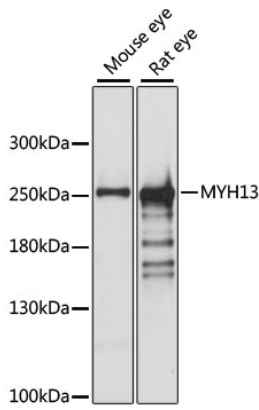
Affinity purification

### Storage

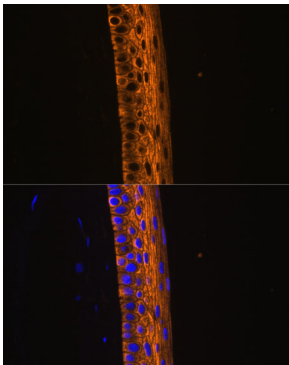
Store at -20°C. Avoid freeze / thaw cycles.

Buffer: PBS with 0.01% thimerosal, 50% glycerol, pH7.3.

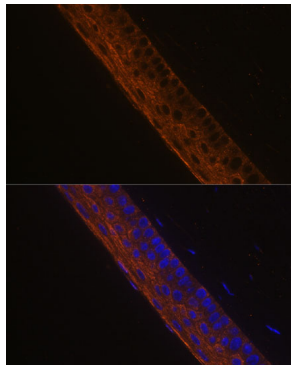
## Validation Data



Western blot analysis of various lysates using MYH13 Rabbit pAb (A14620) at 1:1000 dilution. Secondary antibody: HRP Goat Anti-Rabbit IgG (H+L) (AS014) at 1:10000 dilution. Lysates/proteins: 25µg per lane. Blocking buffer: 3% nonfat dry milk in TBST. Detection: ECL Basic Kit (RM00020). Exposure time: 10s.



Immunofluorescence analysis of paraffin-embedded rat eye using MYH13 Rabbit pAb (A14620) at dilution of 1:100 (40x lens). Secondary antibody: Cy3 Goat Anti-Rabbit IgG (H+L) (AS007) at 1:500 dilution. Blue: DAPI for nuclear staining.



Immunofluorescence analysis of paraffin-embedded mouse eye using MYH13 Rabbit pAb (A14620) at dilution of 1:100 (40x lens). Secondary antibody: Cy3 Goat Anti-Rabbit IgG (H+L) (AS007) at 1:500 dilution. Blue: DAPI for nuclear staining.