

SP1 Rabbit pAb

Catalog No.: A14662SP **11 Publications**

Basic Information

Observed MW

90 kDa

Calculated MW

76 kDa/80 kDa/81 kDa

Category

Primary antibody

Applications

WB,IHC-P,IF/ICC,ELISA

Cross-Reactivity

Human, Mouse, Rat

Background

The protein encoded by this gene is a zinc finger transcription factor that binds to GC-rich motifs of many promoters. The encoded protein is involved in many cellular processes, including cell differentiation, cell growth, apoptosis, immune responses, response to DNA damage, and chromatin remodeling. Post-translational modifications such as phosphorylation, acetylation, glycosylation, and proteolytic processing significantly affect the activity of this protein, which can be an activator or a repressor. Three transcript variants encoding different isoforms have been found for this gene.

Recommended Dilutions

WB 1:1000 - 1:2000

IHC-P 1:200 - 1:2000

IF/ICC 1:200 - 1:1000

ELISA Recommended starting concentration is 1 µg/mL. Please optimize the concentration based on your specific assay requirements. For high-ratio antibody dilutions (≥1:10000) a sequential dilution method is strongly recommended to ensure measurement accuracy.

Immunogen Information

Gene ID

6667

Swiss Prot

P08047

Immunogen

This information is considered to be commercially sensitive.

Synonyms

SP1

Product Information

Source

Rabbit

Isotype

IgG

Purification

Affinity purification

Storage

Store at -20°C. Avoid freeze / thaw cycles.

Buffer: PBS, pH 7.3, containing 50% glycerol. Preserved with Proclin300 or sodium azide.

May contain 0.05% BSA as specified on the Certificate of Analysis.

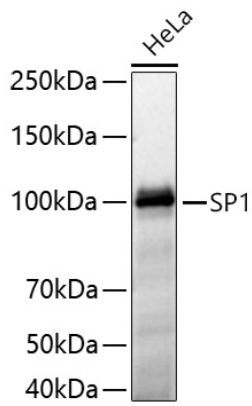
Contact

 | 400-999-6126

 | cn.market@abclonal.com.cn

 | www.abclonal.com.cn

Validation Data



Western blot analysis of lysates from HeLa cells using SP1 Rabbit pAb (A14662SP) at 1:1000 dilution incubated at room temperature for 1.5 hours.
Secondary antibody: HRP-conjugated Goat anti-Rabbit IgG (H+L) (AS014) at 1:10000 dilution.
Lysates/proteins: 25 µg per lane.
Blocking buffer: 3% nonfat dry milk in TBST.
Detection: ECL Basic Kit (RM00020).
Exposure time: 90 s.