

SPRY3 Rabbit pAb

Catalog No.: A14669

Basic Information

Observed MW

36kDa

Calculated MW

31kDa

Category

Primary antibody

Applications

ELISA, WB

Cross-Reactivity

Human

Background

Involved in negative regulation of MAPK cascade. Predicted to be located in membrane. Predicted to be active in cytosol.

Recommended Dilutions

WB 1:500 - 1:2000

Immunogen Information

Gene ID

10251

Swiss Prot

O43610

Immunogen

A synthetic peptide corresponding to a sequence within amino acids 200 to the C-terminus of human SPRY3 (NP_005831.1).

Synonyms

spry-3; SPRY3

Contact

☎ | 400-999-6126

✉ | cn.market@abclonal.com.cn

🌐 | www.abclonal.com.cn

Product Information

Source

Rabbit

Isotype

IgG

Purification

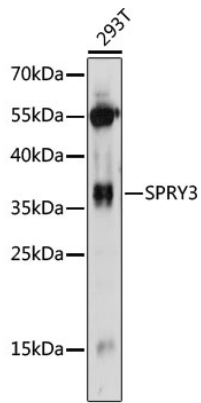
Affinity purification

Storage

Store at -20°C. Avoid freeze / thaw cycles.

Buffer: PBS with 0.01% thimerosal, 50% glycerol, pH7.3.

Validation Data



Western blot analysis of lysates from 293T cells, using SPRY3 Rabbit pAb (A14669) at 1:1000 dilution.
Secondary antibody: HRP Goat Anti-Rabbit IgG (H+L) (AS014) at 1:10000 dilution.
Lysates/proteins: 25µg per lane.
Blocking buffer: 3% nonfat dry milk in TBST.
Detection: ECL Basic Kit (RM00020).
Exposure time: 60s.