

SEC16B Rabbit pAb

Catalog No.: A14678

Basic Information

Observed MW

117kDa

Calculated MW

117kDa

Category

Primary antibody

Applications

ELISA, WB

Cross-Reactivity

Human, Mouse

Background

SEC16B is a mammalian homolog of *S. cerevisiae* Sec16 that is required for organization of transitional endoplasmic reticulum (ER) sites and protein export (Bhattacharyya and Glick, 2007 [PubMed 17192411]).

Recommended Dilutions

WB 1:500 - 1:2000

Immunogen Information

Gene ID

89866

Swiss Prot

Q96JE7

Immunogen

Recombinant fusion protein containing a sequence corresponding to amino acids 250-550 of human SEC16B (NP_149118.2).

Synonyms

RGPR; LZTR2; SEC16S; PGPR-p117; RGPR-p117; SEC16B

Contact

 | 400-999-6126

 | cn.market@abclonal.com.cn

 | www.abclonal.com.cn

Product Information

Source

Rabbit

Isotype

IgG

Purification

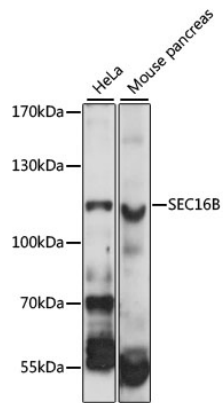
Affinity purification

Storage

Store at -20°C. Avoid freeze / thaw cycles.

Buffer: PBS with 0.01% thimerosal, 50% glycerol, pH7.3.

Validation Data



Western blot analysis of various lysates using SEC16B Rabbit pAb (A14678) at 1:1000 dilution.
Secondary antibody: HRP Goat Anti-Rabbit IgG (H+L) (AS014) at 1:10000 dilution.
Lysates/proteins: 25µg per lane.
Blocking buffer: 3% nonfat dry milk in TBST.
Detection: ECL Basic Kit (RM00020).
Exposure time: 1s.