

IPO11 Rabbit pAb

Catalog No.: A14680

Basic Information

Observed MW

112kDa

Calculated MW

113kDa

Category

Primary antibody

Applications

ELISA, WB

Cross-Reactivity

Human, Mouse

Background

Importins, including IPO11, are members of the karyopherin/importin-beta family of transport receptors (see KPNB1; 602738) that mediate nucleocytoplasmic transport of protein and RNA cargoes (Plafker and Macara, 2000 [PubMed 11032817]).

Recommended Dilutions

WB 1:500 - 1:2000

Immunogen Information

Gene ID

51194

Swiss Prot

Q9UI26

Immunogen

Recombinant fusion protein containing a sequence corresponding to amino acids 776-975 of human IPO11 (NP_057422.3).

Synonyms

RanBP11; IPO11

Contact

☎ | 400-999-6126

✉ | cn.market@abclonal.com.cn

🌐 | www.abclonal.com.cn

Product Information

Source

Rabbit

Isotype

IgG

Purification

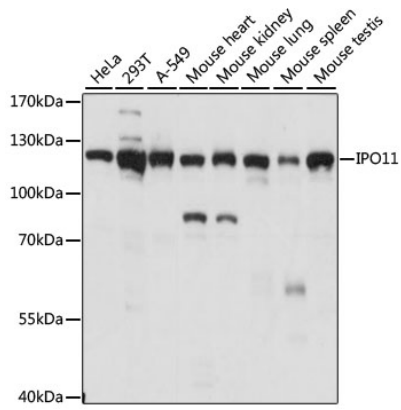
Affinity purification

Storage

Store at -20°C. Avoid freeze / thaw cycles.

Buffer: PBS with 0.01% thimerosal, 50% glycerol, pH7.3.

Validation Data



Western blot analysis of various lysates using IPO11 Rabbit pAb (A14680) at 1:1000 dilution.
Secondary antibody: HRP Goat Anti-Rabbit IgG (H+L) (AS014) at 1:10000 dilution.
Lysates/proteins: 25µg per lane.
Blocking buffer: 3% nonfat dry milk in TBST.
Detection: ECL Basic Kit (RM00020).
Exposure time: 1s.