

ALOX12 Rabbit pAb

Catalog No.: A14703 **7 Publications**

Basic Information

Observed MW

76kDa

Calculated MW

76kDa

Category

Primary antibody

Applications

WB, IF-P, IHC-P, ELISA

Cross-Reactivity

Human, Mouse, Rat

Background

This gene encodes a member of the lipoxygenase family of proteins. The encoded enzyme acts on different polyunsaturated fatty acid substrates to generate bioactive lipid mediators including eicosanoids and lipoxins. The encoded enzyme and its reaction products have been shown to regulate platelet function. Elevated expression of this gene has been observed in pancreatic islets derived from human diabetes patients. Allelic variants in this gene may be associated with susceptibility to toxoplasmosis. Multiple pseudogenes of this gene have been identified in the human genome.

Recommended Dilutions

WB 1:500 - 1:1000**IF-P** 1:50 - 1:200**IHC-P** 1:50 - 1:200**ELISA** Recommended starting concentration is 1 µg/mL. Please optimize the concentration based on your specific assay requirements.

Immunogen Information

Gene ID

239

Swiss Prot

P18054

Immunogen

Recombinant protein (or fragment). This information is considered to be commercially sensitive.

Synonyms

LOG12; 12-LOX; 12S-LOX; ALOX12

Contact

 | 400-999-6126 | cn.market@abclonal.com.cn | www.abclonal.com.cn

Product Information

Source

Rabbit

Isotype

IgG

Purification

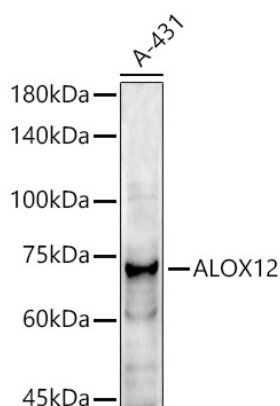
Affinity purification

Storage

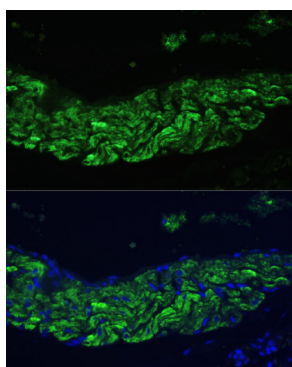
Store at -20°C. Avoid freeze / thaw cycles.

Buffer: PBS containing 50% glycerol, preserved with proclin300 or sodium azide (as specified on the Certificate of Analysis), pH 7.3.

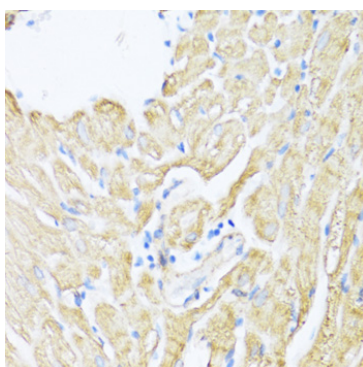
Validation Data



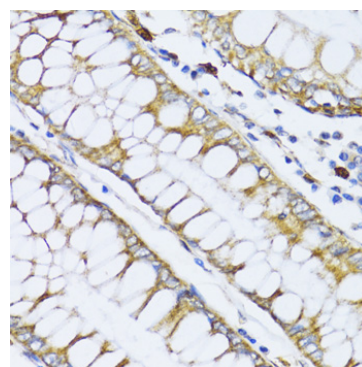
Western blot analysis of lysates from A-431 cells, using ALOX12 Rabbit pAb (A14703) at 1:1000 dilution.
Secondary antibody: HRP-conjugated Goat anti-Rabbit IgG (H+L) (AS014) at 1:10000 dilution.
Lysates/proteins: 25µg per lane.
Blocking buffer: 3% nonfat dry milk in TBST.
Detection: ECL Enhanced Kit (RM00021).
Exposure time: 180s.



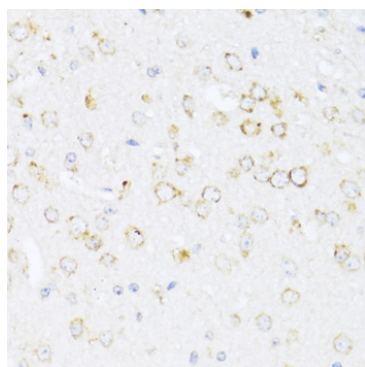
Immunofluorescence analysis of paraffin-embedded rat lung using ALOX12 Rabbit pAb (A14703) at dilution of 1:100 (40x lens).
Secondary antibody: Cy3-conjugated Goat anti-Rabbit IgG (H+L) (AS007) at 1:500 dilution. Blue: DAPI for nuclear staining.



Immunohistochemistry analysis of paraffin-embedded Rat heart using ALOX12 Rabbit pAb (A14703) at dilution of 1:100 (40x lens).
Microwave antigen retrieval performed with 0.01M PBS Buffer (pH 7.2) prior to IHC staining.



Immunohistochemistry analysis of paraffin-embedded Human colon carcinoma using ALOX12 Rabbit pAb (A14703) at dilution of 1:100 (40x lens).
Microwave antigen retrieval performed with 0.01M PBS Buffer (pH 7.2) prior to IHC staining.



Immunohistochemistry analysis of paraffin-embedded Mouse brain using ALOX12 Rabbit pAb (A14703) at dilution of 1:100 (40x lens).
Microwave antigen retrieval performed with 0.01M PBS Buffer (pH 7.2) prior to IHC staining.