

# Calmodulin 1/2/3 Rabbit pAb

Catalog No.: A14711

## Basic Information

### Observed MW

Refer to figures

### Calculated MW

16kDa

### Category

Primary antibody

### Applications

ELISA, IHC-P, IF/ICC

### Cross-Reactivity

Human, Mouse, Rat

## Background

This gene encodes a member of the EF-hand calcium-binding protein family. It is one of three genes which encode an identical calcium binding protein which is one of the four subunits of phosphorylase kinase. Two pseudogenes have been identified on chromosome 7 and X. Multiple transcript variants encoding different isoforms have been found for this gene.

## Recommended Dilutions

IHC-P 1:50 - 1:200

IF/ICC 1:50 - 1:200

## Immunogen Information

### Gene ID

801/805/808

### Swiss Prot

P0DP23/P0DP24/P0DP25

### Immunogen

A synthetic peptide corresponding to a sequence within amino acids 70-149 of human Calmodulin 1/2/3 (NP\_008819.1).

### Synonyms

CALM1; CALML2; CAMI; CPVT4; DD132; LQT14; PHKD; caM; Calmodulin 1/2/3

## Contact

☎ | 400-999-6126

✉ | [cn.market@abclonal.com.cn](mailto:cn.market@abclonal.com.cn)

🌐 | [www.abclonal.com.cn](http://www.abclonal.com.cn)

## Product Information

### Source

Rabbit

### Isotype

IgG

### Purification

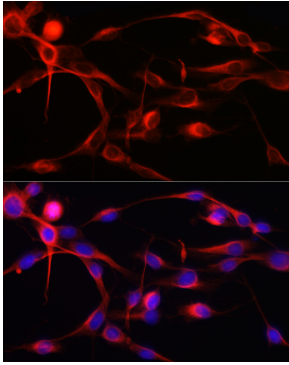
Affinity purification

### Storage

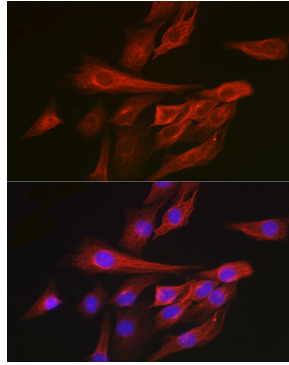
Store at -20°C. Avoid freeze / thaw cycles.

Buffer: PBS with 0.01% thimerosal, 50% glycerol, pH7.3.

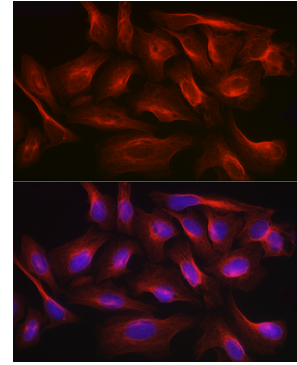
## Validation Data



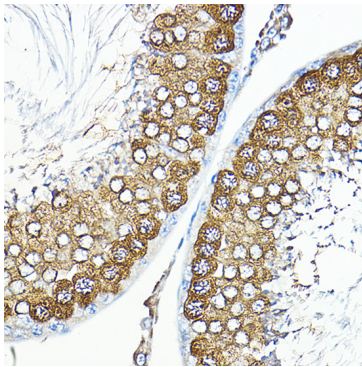
Immunofluorescence analysis of C6 cells using Calmodulin 1/2/3 Rabbit pAb (A14711) at dilution of 1:100 (40x lens). Secondary antibody: Cy3 Goat Anti-Rabbit IgG (H+L) (AS007) at 1:500 dilution. Blue: DAPI for nuclear staining.



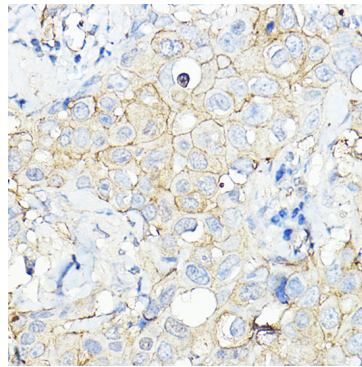
Immunofluorescence analysis of NIH/3T3 cells using Calmodulin 1/2/3 Rabbit pAb (A14711) at dilution of 1:100 (40x lens). Secondary antibody: Cy3 Goat Anti-Rabbit IgG (H+L) (AS007) at 1:500 dilution. Blue: DAPI for nuclear staining.



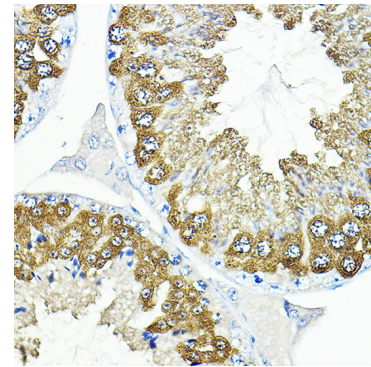
Immunofluorescence analysis of U2OS cells using Calmodulin 1/2/3 Rabbit pAb (A14711) at dilution of 1:100 (40x lens). Secondary antibody: Cy3 Goat Anti-Rabbit IgG (H+L) (AS007) at 1:500 dilution. Blue: DAPI for nuclear staining.



Immunohistochemistry analysis of paraffin-embedded rat testis using Calmodulin 1/2/3 Rabbit pAb (A14711) at dilution of 1:100 (40x lens). Perform high pressure antigen retrieval with 10 mM citrate buffer pH 6.0 before commencing with IHC staining protocol.



Immunohistochemistry analysis of paraffin-embedded human breast cancer using Calmodulin 1/2/3 Rabbit pAb (A14711) at dilution of 1:100 (40x lens). Perform high pressure antigen retrieval with 10 mM citrate buffer pH 6.0 before commencing with IHC staining protocol.



Immunohistochemistry analysis of paraffin-embedded mouse testis using Calmodulin 1/2/3 Rabbit pAb (A14711) at dilution of 1:100 (40x lens). Perform high pressure antigen retrieval with 10 mM citrate buffer pH 6.0 before commencing with IHC staining protocol.