

# DVL2 Rabbit pAb

Catalog No.: A14726

## Basic Information

### Observed MW

**Calculated MW**  
79kDa

**Category**  
Primary antibody

**Applications**  
ELISA,IF/ICC

**Cross-Reactivity**  
Human

## Background

This gene encodes a member of the dishevelled (dsh) protein family. The vertebrate dsh proteins have approximately 40% amino acid sequence similarity with Drosophila dsh. This gene encodes a 90-kD protein that undergoes posttranslational phosphorylation to form a 95-kD cytoplasmic protein, which may play a role in the signal transduction pathway mediated by multiple Wnt proteins. The mechanisms of dishevelled function in Wnt signaling are likely to be conserved among metazoans.

## Recommended Dilutions

IF/ICC 1:50 - 1:200

## Immunogen Information

Gene ID	Swiss Prot
1856	O14641

### Immunogen

Recombinant fusion protein containing a sequence corresponding to amino acids 1-240 of human DVL2 (NP\_004413.1).

### Synonyms

DVL2

## Contact

☎ | 400-999-6126

✉ | [cn.market@abclonal.com.cn](mailto:cn.market@abclonal.com.cn)

🌐 | [www.abclonal.com.cn](http://www.abclonal.com.cn)

## Product Information

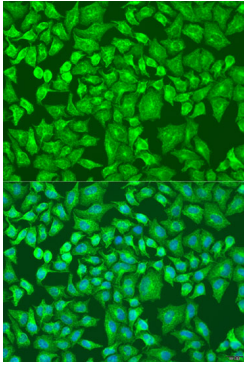
Source	Isotype	Purification
Rabbit	IgG	Affinity purification

### Storage

Store at -20°C. Avoid freeze / thaw cycles.  
Buffer: PBS with 0.02% sodium azide,50% glycerol,pH7.3.

## Validation Data

---



Immunofluorescence analysis of U2OS cells using DVL2 antibody (A14726) at dilution of 1:100. Blue: DAPI for nuclear staining.