

GBX2 Rabbit pAb

Catalog No.: A14733

Basic Information

Observed MW

34kDa

Calculated MW

37kDa

Category

Primary antibody

Applications

WB,ELISA

Cross-Reactivity

Human, Mouse, Rat

Background

Enables sequence-specific double-stranded DNA binding activity. Predicted to be involved in regulation of nervous system development and regulation of transcription by RNA polymerase II. Predicted to act upstream of or within several processes, including branching involved in blood vessel morphogenesis; nervous system development; and neural crest cell migration. Predicted to be part of chromatin. Predicted to be active in nucleus.

Recommended Dilutions

WB 1:500 - 1:1000

ELISA Recommended starting concentration is 1 µg/mL. Please optimize the concentration based on your specific assay requirements.

Immunogen Information

Gene ID

2637

Swiss Prot

P52951

Immunogen

Recombinant fusion protein containing a sequence corresponding to amino acids 1-250 of human GBX2 (NP_001476.2).

Synonyms

GBX2

Contact

☎ | 400-999-6126

✉ | cn.market@abclonal.com.cn

🌐 | www.abclonal.com.cn

Product Information

Source

Rabbit

Isotype

IgG

Purification

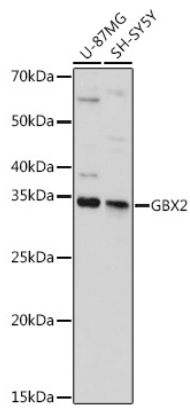
Affinity purification

Storage

Store at -20°C. Avoid freeze / thaw cycles.

Buffer: PBS with 0.05% proclin300,50% glycerol,pH7.3.

Validation Data



Western blot analysis of various lysates using GBX2 Rabbit pAb (A14733) at 1:1000 dilution.
Secondary antibody: HRP-conjugated Goat anti-Rabbit IgG (H+L) (AS014) at 1:10000 dilution.
Lysates/proteins: 25µg per lane.
Blocking buffer: 3% nonfat dry milk in TBST.
Detection: ECL Basic Kit (RM00020).
Exposure time: 10s.