

ISG20 Rabbit pAb

Catalog No.: A14744 **2 Publications**

Basic Information

Observed MW

20kDa

Calculated MW

20kDa

Category

Primary antibody

Applications

ELISA, WB

Cross-Reactivity

Human, Mouse, Rat

Background

Enables 3'-5' exonuclease activity and RNA binding activity. Involved in defense response to virus; negative regulation of viral genome replication; and nucleobase-containing compound catabolic process. Located in cytoplasm and nuclear lumen.

Recommended Dilutions

WB 1:500 - 1:2000

Immunogen Information

Gene ID

3669

Swiss Prot

Q96AZ6

Immunogen

Recombinant fusion protein containing a sequence corresponding to amino acids 1-70 of human ISG20 (NP_002192.2).

Synonyms

CD25; HEM45; ISG20

Contact

☎ | 400-999-6126

✉ | cn.market@abclonal.com.cn

🌐 | www.abclonal.com.cn

Product Information

Source

Rabbit

Isotype

IgG

Purification

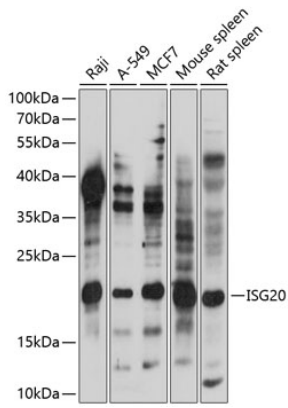
Affinity purification

Storage

Store at -20°C. Avoid freeze / thaw cycles.

Buffer: PBS with 0.01% thimerosal, 50% glycerol, pH7.3.

Validation Data



Western blot analysis of various lysates using ISG20 Rabbit pAb (A14744) at 1:1000 dilution.
Secondary antibody: HRP Goat Anti-Rabbit IgG (H+L) (AS014) at 1:10000 dilution.
Lysates/proteins: 25µg per lane.
Blocking buffer: 3% nonfat dry milk in TBST.
Detection: ECL Basic Kit (RM00020).
Exposure time: 10s.