

# PLXNB3 Rabbit pAb

Catalog No.: A14767

## Basic Information

### Observed MW

172kDa

### Calculated MW

207kDa

### Category

Primary antibody

### Applications

ELISA, WB

### Cross-Reactivity

Rat

## Background

The protein encoded by this gene is a member of the plexin family. It functions as a receptor for semaphorin 5A, and plays a role in axon guidance, invasive growth and cell migration. Alternatively spliced transcript variants encoding different isoforms have been found for this gene.

## Recommended Dilutions

WB 1:500 - 1:2000

## Immunogen Information

### Gene ID

5365

### Swiss Prot

Q9ULL4

### Immunogen

Recombinant fusion protein containing a sequence corresponding to amino acids 1050-1250 of human PLXNB3 (NP\_001156729.1).

### Synonyms

PLEXR; PLXN6; PLEXB3; PLXNB3

## Contact

 | 400-999-6126

 | [cn.market@abclonal.com.cn](mailto:cn.market@abclonal.com.cn)

 | [www.abclonal.com.cn](http://www.abclonal.com.cn)

## Product Information

### Source

Rabbit

### Isotype

IgG

### Purification

Affinity purification

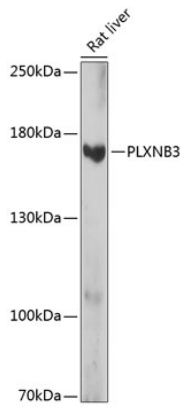
### Storage

Store at -20°C. Avoid freeze / thaw cycles.

Buffer: PBS with 0.01% thimerosal, 50% glycerol, pH7.3.

## Validation Data

---



Western blot analysis of lysates from rat liver, using PLXNB3 Rabbit pAb (A14767) at 1:1000 dilution.  
Secondary antibody: HRP Goat Anti-Rabbit IgG (H+L) (AS014) at 1:10000 dilution.  
Lysates/proteins: 25µg per lane.  
Blocking buffer: 3% nonfat dry milk in TBST.  
Detection: ECL Basic Kit (RM00020).  
Exposure time: 15s.