

BrdU Mouse mAb

Catalog No.: A1482 **26 Publications**

Basic Information

Observed MW

Calculated MW

Category

Primary antibody

Applications

IF/ICC,ELISA

Cross-Reactivity

ALL

CloneNo number

AMC0528

Background

Recommended Dilutions

IF/ICC 1:200 - 1:800

ELISA Recommended starting concentration is 1 µg/mL. Please optimize the concentration based on your specific assay requirements.

Immunogen Information

Gene ID

Swiss Prot

Immunogen

Recombinant protein (or fragment). This information is considered to be commercially sensitive.

Synonyms

Contact

 | 400-999-6126

 | cn.market@abclonal.com.cn

 | www.abclonal.com.cn

Product Information

Source

Mouse

Isotype

IgG1,Kappa

Purification

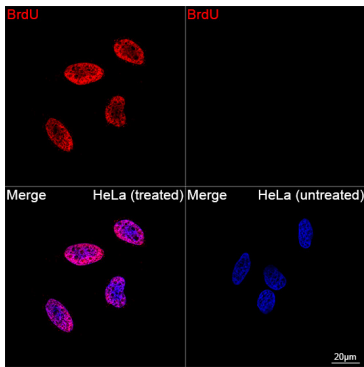
Affinity purification

Storage

Store at -20°C. Avoid freeze / thaw cycles.

Buffer: PBS containing 50% glycerol, preserved with proclin300 or sodium azide (as specified on the Certificate of Analysis), pH 7.3.

Validation Data



Confocal imaging of HeLa cells (treated with BrdU) and HeLa cells (untreated) using BrdU Mouse mAb (A1482, dilution 1:200) followed by a further incubation with Cy3-conjugated Goat anti-Mouse IgG (H+L) (AS008, dilution 1:500) (Red). DAPI was used for nuclear staining (Blue). Objective: 100x.