

# RALGPS1 Rabbit pAb

Catalog No.: A14827

## Basic Information

### Observed MW

62kDa

### Calculated MW

62kDa

### Category

Primary antibody

### Applications

ELISA, WB

### Cross-Reactivity

Rat

## Background

Enables guanyl-nucleotide exchange factor activity. Involved in regulation of Ral protein signal transduction. Predicted to be located in cytoplasm and plasma membrane.

## Recommended Dilutions

WB 1:500 - 1:2000

## Immunogen Information

### Gene ID

9649

### Swiss Prot

Q5JS13

### Immunogen

Recombinant fusion protein containing a sequence corresponding to amino acids 1-300 of human RALGPS1 (NP\_055451.1).

### Synonyms

RALGEF2; RALGPS1A; RALGPS1

## Contact

☎ | 400-999-6126

✉ | [cn.market@abclonal.com.cn](mailto:cn.market@abclonal.com.cn)

🌐 | [www.abclonal.com.cn](http://www.abclonal.com.cn)

## Product Information

### Source

Rabbit

### Isotype

IgG

### Purification

Affinity purification

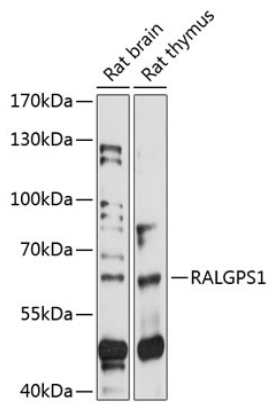
### Storage

Store at -20°C. Avoid freeze / thaw cycles.

Buffer: PBS with 0.01% thimerosal, 50% glycerol, pH7.3.

## Validation Data

---



Western blot analysis of various lysates using RALGPS1 Rabbit pAb (A14827) at 1:1000 dilution.  
Secondary antibody: HRP Goat Anti-Rabbit IgG (H+L) (AS014) at 1:10000 dilution.  
Lysates/proteins: 25 $\mu$ g per lane.  
Blocking buffer: 3% nonfat dry milk in TBST.  
Detection: ECL Basic Kit (RM00020).  
Exposure time: 90s.