

# SLC25A17 Rabbit pAb

Catalog No.: A14840 **3 Publications**

## Basic Information

### Observed MW

34kDa

### Calculated MW

35kDa

### Category

Primary antibody

### Applications

ELISA, WB, IF/ICC

### Cross-Reactivity

Human, Mouse

## Background

This gene encodes a peroxisomal membrane protein that belongs to the family of mitochondrial solute carriers. It is expressed in the liver, and is likely involved in transport. Alternative splicing results in multiple transcript variants.

## Recommended Dilutions

WB 1:500 - 1:2000

IF/ICC 1:50 - 1:200

## Immunogen Information

### Gene ID

10478

### Swiss Prot

O43808

### Immunogen

A synthetic peptide corresponding to a sequence within amino acids 150-250 of human SLC25A17 (NP\_006349.1).

### Synonyms

PMP34; SLC25A17

## Contact

☎ | 400-999-6126

✉ | [cn.market@abclonal.com.cn](mailto:cn.market@abclonal.com.cn)

🌐 | [www.abclonal.com.cn](http://www.abclonal.com.cn)

## Product Information

### Source

Rabbit

### Isotype

IgG

### Purification

Affinity purification

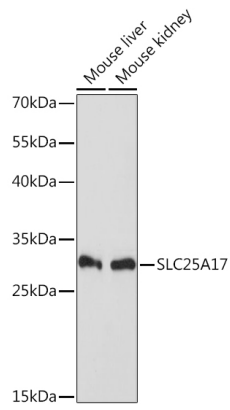
### Storage

Store at -20°C. Avoid freeze / thaw cycles.

Buffer: PBS with 0.01% thimerosal, 50% glycerol, pH7.3.

## Validation Data

---



Western blot analysis of various lysates using SLC25A17 Rabbit pAb (A14840) at 1:1000 dilution.  
Secondary antibody: HRP Goat Anti-Rabbit IgG (H+L) (AS014) at 1:10000 dilution.  
Lysates/proteins: 25 $\mu$ g per lane.  
Blocking buffer: 3% nonfat dry milk in TBST.  
Detection: ECL Basic Kit (RM00020).  
Exposure time: 90s.