

CGREF1 Rabbit pAb

Catalog No.: A14844 **1 Publications**

Basic Information

Observed MW

32kDa

Calculated MW

33kDa

Category

Primary antibody

Applications

ELISA, WB

Cross-Reactivity

Mouse, Rat

Background

Predicted to enable calcium ion binding activity. Predicted to be involved in negative regulation of cell population proliferation. Predicted to be located in extracellular region.

Recommended Dilutions

WB 1:500 - 1:2000

Immunogen Information

Gene ID

10669

Swiss Prot

Q99674

Immunogen

Recombinant fusion protein containing a sequence corresponding to amino acids 20-200 of human CGREF1 (NP_006560.3).

Synonyms

CGR11; CGREF1

Contact

☎ | 400-999-6126

✉ | cn.market@abclonal.com.cn

🌐 | www.abclonal.com.cn

Product Information

Source

Rabbit

Isotype

IgG

Purification

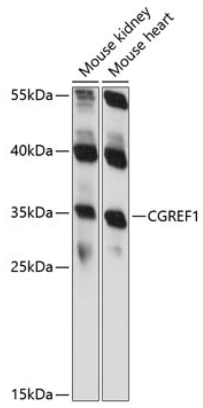
Affinity purification

Storage

Store at -20°C. Avoid freeze / thaw cycles.

Buffer: PBS with 0.01% thimerosal, 50% glycerol, pH7.3.

Validation Data



Western blot analysis of various lysates using CGREF1 Rabbit pAb (A14844) at 1:1000 dilution.
Secondary antibody: HRP Goat Anti-Rabbit IgG (H+L) (AS014) at 1:10000 dilution.
Lysates/proteins: 25µg per lane.
Blocking buffer: 3% nonfat dry milk in TBST.
Detection: ECL Basic Kit (RM00020).
Exposure time: 90s.