

# PDXDC1 Rabbit pAb

Catalog No.: A14856

## Basic Information

### Observed MW

87-106kDa

### Calculated MW

87kDa

### Category

Primary antibody

### Applications

ELISA, WB, IHC-P

### Cross-Reactivity

Human, Mouse, Rat

## Background

Enables cadherin binding activity. Predicted to be involved in carboxylic acid metabolic process. Located in Golgi apparatus.

## Recommended Dilutions

WB 1:500 - 1:2000

IHC-P 1:50 - 1:200

## Immunogen Information

### Gene ID

23042

### Swiss Prot

Q6P996

### Immunogen

Recombinant fusion protein containing a sequence corresponding to amino acids 489-788 of human PDXDC1 (NP\_055842.2).

### Synonyms

LP8165; PDXDC1

## Contact

☎ | 400-999-6126

✉ | [cn.market@abclonal.com.cn](mailto:cn.market@abclonal.com.cn)

🌐 | [www.abclonal.com.cn](http://www.abclonal.com.cn)

## Product Information

### Source

Rabbit

### Isotype

IgG

### Purification

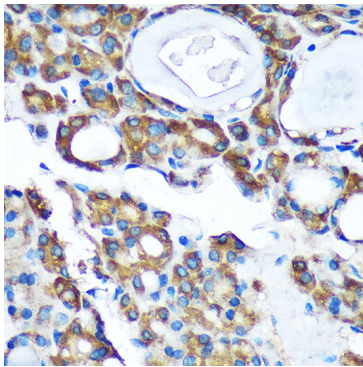
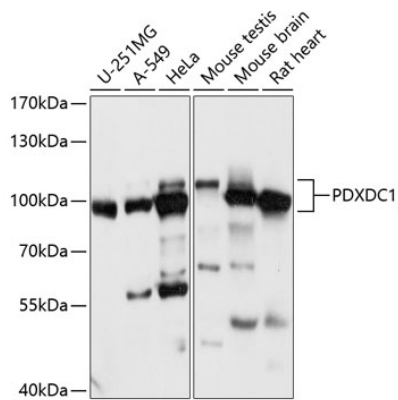
Affinity purification

### Storage

Store at -20°C. Avoid freeze / thaw cycles.

Buffer: PBS with 0.01% thimerosal, 50% glycerol, pH7.3.

## Validation Data



Immunohistochemistry analysis of paraffin-embedded Human thyroid cancer using PDXDC1 Rabbit pAb (A14856) at dilution of 1:100 (40x lens). Perform microwave antigen retrieval with 10 mM PBS buffer pH 7.2 before commencing with IHC staining protocol.