

SWAP70 Rabbit pAb

Catalog No.: A14857

Basic Information

Observed MW

69kDa

Calculated MW

69kDa

Category

Primary antibody

Applications

ELISA, WB, IHC-P, IF/ICC

Cross-Reactivity

Human, Mouse, Rat

Background

Enables cadherin binding activity. Predicted to be involved in regulation of actin polymerization or depolymerization. Predicted to act upstream of or within isotype switching. Located in actin cytoskeleton; cytoplasm; and plasma membrane.

Recommended Dilutions

WB	1:500 - 1:2000
IHC-P	1:50 - 1:200
IF/ICC	1:50 - 1:200

Immunogen Information

Gene ID

23075

Swiss Prot

Q9UH65

Immunogen

Recombinant fusion protein containing a sequence corresponding to amino acids 316-585 of human SWAP70 (NP_055870.2).

Synonyms

HSPC321; SWAP-70; SWAP70

Contact

☎ | 400-999-6126

✉ | cn.market@abclonal.com.cn

🌐 | www.abclonal.com.cn

Product Information

Source

Rabbit

Isotype

IgG

Purification

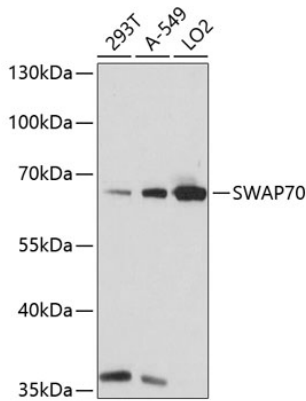
Affinity purification

Storage

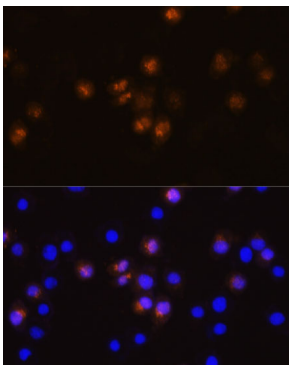
Store at -20°C. Avoid freeze / thaw cycles.

Buffer: PBS with 0.01% thimerosal, 50% glycerol, pH7.3.

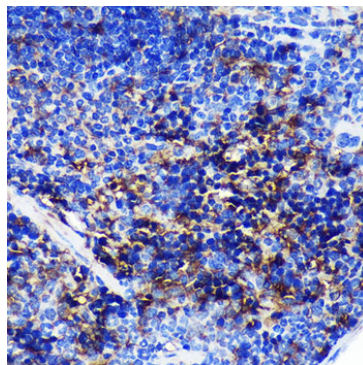
Validation Data



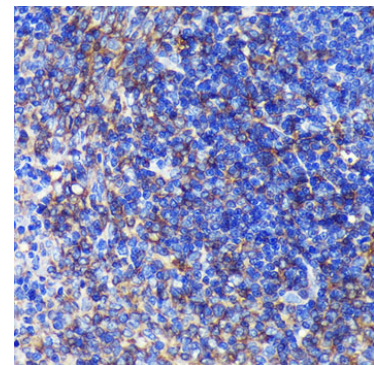
Western blot analysis of various lysates using SWAP70 Rabbit pAb (A14857) at 1:1000 dilution. Secondary antibody: HRP Goat Anti-Rabbit IgG (H+L) (AS014) at 1:10000 dilution. Lysates/proteins: 25µg per lane. Blocking buffer: 3% nonfat dry milk in TBST. Detection: ECL Basic Kit (RM00020). Exposure time: 5s.



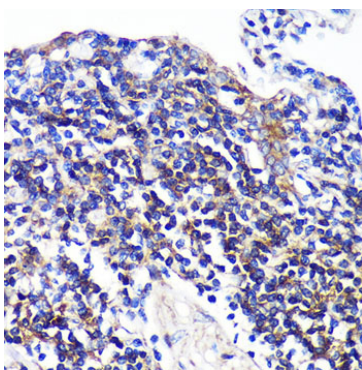
Immunofluorescence analysis of L929 cells using SWAP70 Rabbit pAb (A14857) at dilution of 1:100. Secondary antibody: Cy3 Goat Anti-Rabbit IgG (H+L) (AS007) at 1:500 dilution. Blue: DAPI for nuclear staining.



Immunohistochemistry analysis of paraffin-embedded Mouse spleen using SWAP70 Rabbit pAb (A14857) at dilution of 1:100 (40x lens). Perform microwave antigen retrieval with 10 mM PBS buffer pH 7.2 before commencing with IHC staining protocol.



Immunohistochemistry analysis of paraffin-embedded Rat spleen using SWAP70 Rabbit pAb (A14857) at dilution of 1:100 (40x lens). Perform microwave antigen retrieval with 10 mM PBS buffer pH 7.2 before commencing with IHC staining protocol.



Immunohistochemistry analysis of paraffin-embedded Human lung using SWAP70 Rabbit pAb (A14857) at dilution of 1:100 (40x lens). Perform microwave antigen retrieval with 10 mM PBS buffer pH 7.2 before commencing with IHC staining protocol.