

# CEP68 Rabbit pAb

Catalog No.: A14858

## Basic Information

### Observed MW

76kDa

### Calculated MW

81kDa

### Category

Primary antibody

### Applications

WB, ELISA

### Cross-Reactivity

Human, Mouse, Rat

## Background

Enables protein domain specific binding activity and protein kinase binding activity. Involved in centriole-centriole cohesion and protein localization to organelle. Located in several cellular components, including centriolar satellite; cytosol; and nucleoplasm.

## Recommended Dilutions

**WB** 1:500 - 1:2000

**ELISA** Recommended starting concentration is 1 µg/mL. Please optimize the concentration based on your specific assay requirements.

## Immunogen Information

### Gene ID

23177

### Swiss Prot

Q76N32

### Immunogen

Recombinant protein (or fragment). This information is considered to be commercially sensitive.

### Synonyms

KIAA0582; CEP68

## Contact

☎ | 400-999-6126

✉ | [cn.market@abclonal.com.cn](mailto:cn.market@abclonal.com.cn)

🌐 | [www.abclonal.com.cn](http://www.abclonal.com.cn)

## Product Information

### Source

Rabbit

### Isotype

IgG

### Purification

Affinity purification

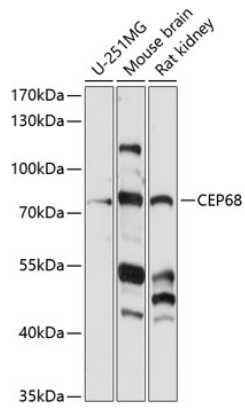
### Storage

Store at -20°C. Avoid freeze / thaw cycles.

Buffer: PBS with 0.01% thimerosal, 50% glycerol, pH 7.3.

## Validation Data

---



Western blot analysis of various lysates using CEP68 Rabbit pAb (A14858) at 1:1000 dilution.  
Secondary antibody: HRP-conjugated Goat anti-Rabbit IgG (H+L) (AS014) at 1:10000 dilution.  
Lysates/proteins: 25 $\mu$ g per lane.  
Blocking buffer: 3% nonfat dry milk in TBST.  
Detection: ECL Enhanced Kit (RM00021).  
Exposure time: 90s.