

SLC7A8 Rabbit pAb

Catalog No.: A14861 **1 Publications**

Basic Information

Observed MW

58kDa

Calculated MW

58kDa

Category

Primary antibody

Applications

ELISA, WB

Cross-Reactivity

Human

Background

Enables several functions, including neutral amino acid transmembrane transporter activity; thyroid hormone transmembrane transporter activity; and toxin transmembrane transporter activity. Involved in L-alanine import across plasma membrane; L-leucine import across plasma membrane; and thyroid hormone transport. Located in plasma membrane. Part of basolateral plasma membrane and microvillus membrane.

Recommended Dilutions

WB 1:500 - 1:2000

Immunogen Information

Gene ID

23428

Swiss Prot

Q9UH15

Immunogen

A synthetic peptide corresponding to a sequence within amino acids 150-250 of human SLC7A8 (NP_036376.2).

Synonyms

LAT2; LPI-PC1; SLC7A8

Contact

☎ | 400-999-6126

✉ | cn.market@abclonal.com.cn

🌐 | www.abclonal.com.cn

Product Information

Source

Rabbit

Isotype

IgG

Purification

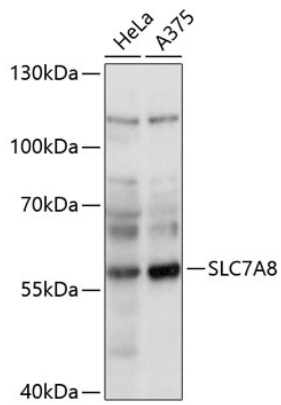
Affinity purification

Storage

Store at -20°C. Avoid freeze / thaw cycles.

Buffer: PBS with 0.01% thimerosal, 50% glycerol, pH7.3.

Validation Data



Western blot analysis of various lysates using SLC7A8 Rabbit pAb (A14861) at 1:1000 dilution.
Secondary antibody: HRP Goat Anti-Rabbit IgG (H+L) (AS014) at 1:10000 dilution.
Lysates/proteins: 25µg per lane.
Blocking buffer: 3% nonfat dry milk in TBST.
Detection: ECL Basic Kit (RM00020).
Exposure time: 10s.