

ATRNL1 Rabbit pAb

Catalog No.: A14868 **2 Publications**

Basic Information

Observed MW

153kDa

Calculated MW

153kDa

Category

Primary antibody

Applications

ELISA, WB

Cross-Reactivity

Human, Mouse

Background

Predicted to enable carbohydrate binding activity. Predicted to be involved in several processes, including animal organ morphogenesis; cell migration; and substrate adhesion-dependent cell spreading. Predicted to act upstream of or within G protein-coupled receptor signaling pathway. Predicted to be located in membrane. Predicted to be integral component of membrane. Predicted to be active in basement membrane.

Recommended Dilutions

WB 1:500 - 1:2000

Immunogen Information

Gene ID

26033

Swiss Prot

Q5VV63

Immunogen

Recombinant fusion protein containing a sequence corresponding to amino acids 53-160 of human ATRNL1 (NP_001263211.1).

Synonyms

ALP; bA338L11.1; bA454H24.1; ATRNL1

Contact

 | 400-999-6126

 | cn.market@abclonal.com.cn

 | www.abclonal.com.cn

Product Information

Source

Rabbit

Isotype

IgG

Purification

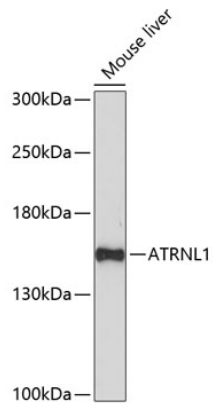
Affinity purification

Storage

Store at -20°C. Avoid freeze / thaw cycles.

Buffer: PBS with 0.01% thimerosal, 50% glycerol, pH7.3.

Validation Data



Western blot analysis of lysates from mouse liver, using ATRNL1 Rabbit pAb (A14868) at 1:1000 dilution.
Secondary antibody: HRP Goat Anti-Rabbit IgG (H+L) (AS014) at 1:10000 dilution.
Lysates/proteins: 25µg per lane.
Blocking buffer: 3% nonfat dry milk in TBST.
Detection: ECL Basic Kit (RM00020).
Exposure time: 90s.