

# SERBP1 Rabbit pAb

Catalog No.: A14870 **1 Publications**

## Basic Information

### Observed MW

60kDa

### Calculated MW

45kDa

### Category

Primary antibody

### Applications

ELISA, WB

### Cross-Reactivity

Human, Mouse, Rat

## Background

Enables SUMO binding activity; mRNA 3'-UTR binding activity; and ribosome binding activity. Involved in PML body organization. Located in cytosol and nucleus.

## Recommended Dilutions

**WB** 1:500 - 1:2000

## Immunogen Information

### Gene ID

26135

### Swiss Prot

Q8NC51

### Immunogen

Recombinant fusion protein containing a sequence corresponding to amino acids 1-114 of human SERBP1 (NP\_001018078.1).

### Synonyms

CGI-55; CHD3IP; HABP4L; PAIRBP1; PAI-RBP1; SERBP1

## Contact

 | 400-999-6126

 | [cn.market@abclonal.com.cn](mailto:cn.market@abclonal.com.cn)

 | [www.abclonal.com.cn](http://www.abclonal.com.cn)

## Product Information

### Source

Rabbit

### Isotype

IgG

### Purification

Affinity purification

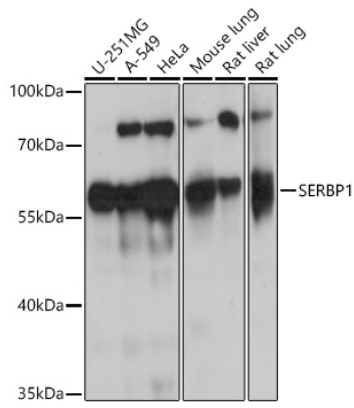
### Storage

Store at -20°C. Avoid freeze / thaw cycles.

Buffer: PBS with 0.01% thimerosal, 50% glycerol, pH7.3.

## Validation Data

---



Western blot analysis of various lysates using SERBP1 Rabbit pAb (A14870) at 1:1000 dilution.  
Secondary antibody: HRP Goat Anti-Rabbit IgG (H+L) (AS014) at 1:10000 dilution.  
Lysates/proteins: 25µg per lane.  
Blocking buffer: 3% nonfat dry milk in TBST.  
Detection: ECL Basic Kit (RM00020).  
Exposure time: 30s.