

DEXI Rabbit pAb

Catalog No.: A14879

Basic Information

Observed MW

15kDa

Calculated MW

10kDa

Category

Primary antibody

Applications

WB, ELISA

Cross-Reactivity

Human

Background

DEXI (Dexi Homolog) is a Protein Coding gene. Diseases associated with DEXI include Fibrosclerosis Of Breast and Immunoglobulin A Deficiency 1.

Recommended Dilutions

WB 1:500 - 1:2000

ELISA Recommended starting concentration is 1 µg/mL. Please optimize the concentration based on your specific assay requirements.

Immunogen Information

Gene ID

28955

Swiss Prot

O95424

Immunogen

Recombinant protein (or fragment). This information is considered to be commercially sensitive.

Synonyms

MYLE; DEXI

Contact

☎ | 400-999-6126

✉ | cn.market@abclonal.com.cn

🌐 | www.abclonal.com.cn

Product Information

Source

Rabbit

Isotype

IgG

Purification

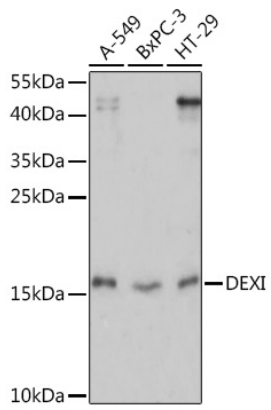
Affinity purification

Storage

Store at -20°C. Avoid freeze / thaw cycles.

Buffer: PBS with 0.01% thimerosal, 50% glycerol, pH7.3.

Validation Data



Western blot analysis of various lysates using DEXI Rabbit pAb (A14879) at 1:1000 dilution.
Secondary antibody: HRP-conjugated Goat anti-Rabbit IgG (H+L) (AS014) at 1:10000 dilution.
Lysates/proteins: 25µg per lane.
Blocking buffer: 3% nonfat dry milk in TBST.
Detection: ECL Basic Kit (RM00020).
Exposure time: 90s.