

CDIP1 Rabbit pAb

Catalog No.: A14883 **1 Publications**

Basic Information

Observed MW

22kDa

Calculated MW

22kDa

Category

Primary antibody

Applications

ELISA, WB

Cross-Reactivity

Mouse, Rat

Background

Predicted to enable metal ion binding activity. Acts upstream of or within intrinsic apoptotic signaling pathway in response to DNA damage by p53 class mediator and tumor necrosis factor-mediated signaling pathway. Located in cytoplasmic side of late endosome membrane; cytoplasmic side of lysosomal membrane; and nucleus.

Recommended Dilutions

WB 1:500 - 1:2000

Immunogen Information

Gene ID

29965

Swiss Prot

Q9H305

Immunogen

A synthetic peptide corresponding to a sequence within amino acids 100-200 of human CDIP1 (NP_001185983.1).

Synonyms

I1; CDIP; LITAF1; C16orf5; CDIP1

Contact

☎ | 400-999-6126

✉ | cn.market@abclonal.com.cn

🌐 | www.abclonal.com.cn

Product Information

Source

Rabbit

Isotype

IgG

Purification

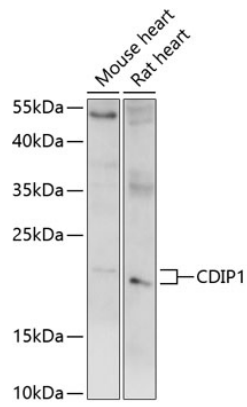
Affinity purification

Storage

Store at -20°C. Avoid freeze / thaw cycles.

Buffer: PBS with 0.01% thimerosal, 50% glycerol, pH7.3.

Validation Data



Western blot analysis of various lysates using CDIP1 Rabbit pAb (A14883) at 1:1000 dilution.
Secondary antibody: HRP Goat Anti-Rabbit IgG (H+L) (AS014) at 1:10000 dilution.
Lysates/proteins: 25µg per lane.
Blocking buffer: 3% nonfat dry milk in TBST.
Detection: ECL Basic Kit (RM00020).
Exposure time: 5s.