

GOLGA7 Rabbit pAb

Catalog No.: A14888

Basic Information

Observed MW

16kDa

Calculated MW

16kDa

Category

Primary antibody

Applications

ELISA, WB

Cross-Reactivity

Human, Mouse

Background

Involved in Golgi to plasma membrane protein transport; peptidyl-L-cysteine S-palmitoylation; and protein stabilization. Acts upstream of or within Golgi to plasma membrane transport. Located in Golgi membrane and Golgi stack. Is intrinsic component of Golgi membrane. Part of palmitoyltransferase complex.

Recommended Dilutions

WB 1:500 - 1:2000

Immunogen Information

Gene ID

51125

Swiss Prot

Q7Z5G4

Immunogen

Recombinant fusion protein containing a sequence corresponding to amino acids 1-134 of human GOLGA7 (NP_001167595.1).

Synonyms

GCP16; GOLGA7A; HSPC041; GOLGA3AP1; GOLGA7

Contact

 | 400-999-6126

 | cn.market@abclonal.com.cn

 | www.abclonal.com.cn

Product Information

Source

Rabbit

Isotype

IgG

Purification

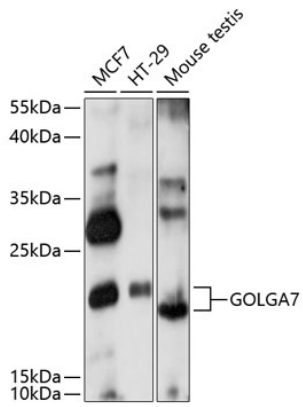
Affinity purification

Storage

Store at -20°C. Avoid freeze / thaw cycles.

Buffer: PBS with 0.01% thimerosal, 50% glycerol, pH7.3.

Validation Data



Western blot analysis of various lysates using GOLGA7 Rabbit pAb (A14888) at 1:1000 dilution.
Secondary antibody: HRP Goat Anti-Rabbit IgG (H+L) (AS014) at 1:10000 dilution.
Lysates/proteins: 25µg per lane.
Blocking buffer: 3% nonfat dry milk in TBST.
Detection: ECL Basic Kit (RM00020).
Exposure time: 90s.