

# [KO Validated] CHRAC1 Rabbit pAb

Catalog No.: A14896 **KO Validated** **2 Publications**

## Basic Information

### Observed MW

14kDa

### Calculated MW

15kDa

### Category

Primary antibody

### Applications

ELISA, WB

### Cross-Reactivity

Human, Mouse, Rat

## Background

CHRAC1 is a histone-fold protein that interacts with other histone-fold proteins to bind DNA in a sequence-independent manner. These histone-fold protein dimers combine within larger enzymatic complexes for DNA transcription, replication, and packaging.

## Recommended Dilutions

WB 1:500 - 1:2000

## Immunogen Information

### Gene ID

54108

### Swiss Prot

Q9NRG0

### Immunogen

Recombinant fusion protein containing a sequence corresponding to amino acids 1-131 of human CHRAC1 (NP\_059140.1).

### Synonyms

YCL1; CHARC1; CHARC15; CHRAC-1; CHRAC15; CHRAC-15; C1

## Contact

 | 400-999-6126

 | [cn.market@abclonal.com.cn](mailto:cn.market@abclonal.com.cn)

 | [www.abclonal.com.cn](http://www.abclonal.com.cn)

## Product Information

### Source

Rabbit

### Isotype

IgG

### Purification

Affinity purification

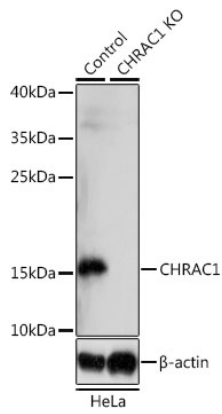
### Storage

Store at -20°C. Avoid freeze / thaw cycles.

Buffer: PBS with 0.02% sodium azide, 50% glycerol, pH7.3.

## Validation Data

---



Western blot analysis of extracts from normal (control) and CHRAC1 knockout (KO) HeLa cells, using CHRAC1 antibody (A14896) at 1:1000 dilution.

Secondary antibody: HRP Goat Anti-Rabbit IgG (H+L) (AS014) at 1:10000 dilution.

Lysates/proteins: 25µg per lane.

Blocking buffer: 3% nonfat dry milk in TBST.

Detection: ECL Basic Kit (RM00020).

Exposure time: 15s.