

# LINS1 Rabbit pAb

Catalog No.: A14903

## Basic Information

### Observed MW

86kDa

### Calculated MW

55kDa/85kDa

### Category

Primary antibody

### Applications

WB, ELISA

### Cross-Reactivity

Mouse, Rat

## Background

Predicted to be involved in cognition. Human ortholog(s) of this gene implicated in autosomal recessive non-syndromic intellectual disability. Orthologous to human LINS1 (lines homolog 1).

## Recommended Dilutions

**WB** 1:500 - 1:2000

**ELISA** Recommended starting concentration is 1 µg/mL. Please optimize the concentration based on your specific assay requirements.

## Immunogen Information

### Gene ID

72635

### Swiss Prot

### Immunogen

Synthetic peptide. This information is considered to be commercially sensitive.

### Synonyms

Lins; Lins2; Wins2; 2700083B01Rik; LINS1

## Contact

☎ | 400-999-6126

✉ | [cn.market@abclonal.com.cn](mailto:cn.market@abclonal.com.cn)

🌐 | [www.abclonal.com.cn](http://www.abclonal.com.cn)

## Product Information

### Source

Rabbit

### Isotype

IgG

### Purification

Affinity purification

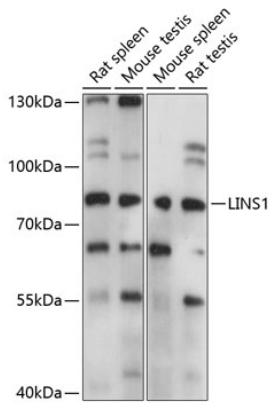
### Storage

Store at -20°C. Avoid freeze / thaw cycles.

Buffer: PBS with 0.01% thimerosal, 50% glycerol, pH7.3.

## Validation Data

---



Western blot analysis of various lysates using LINS1 Rabbit pAb (A14903) at 1:1000 dilution. Secondary antibody: HRP-conjugated Goat anti-Rabbit IgG (H+L) (AS014) at 1:10000 dilution. Lysates/proteins: 25µg per lane. Blocking buffer: 3% nonfat dry milk in TBST. Detection: ECL Basic Kit (RM00020). Exposure time: 1s.