

# LRFN3 Rabbit pAb

Catalog No.: A14927

## Basic Information

### Observed MW

66kDa

### Calculated MW

66kDa

### Category

Primary antibody

### Applications

ELISA, WB

### Cross-Reactivity

Human, Mouse, Rat

## Background

Predicted to be involved in regulation of presynapse assembly; regulation of synaptic membrane adhesion; and synaptic membrane adhesion. Predicted to be located in plasma membrane. Predicted to be active in cell surface and glutamatergic synapse. Predicted to be integral component of postsynaptic density membrane and integral component of presynaptic active zone membrane.

## Recommended Dilutions

WB 1:500 - 1:2000

## Immunogen Information

### Gene ID

79414

### Swiss Prot

Q9BTN0

### Immunogen

Recombinant fusion protein containing a sequence corresponding to amino acids 380-530 of human LRFN3 (NP\_078785.1).

### Synonyms

SALM4; FIGLER1; LRFN3

## Contact

☎ | 400-999-6126

✉ | [cn.market@abclonal.com.cn](mailto:cn.market@abclonal.com.cn)

🌐 | [www.abclonal.com.cn](http://www.abclonal.com.cn)

## Product Information

### Source

Rabbit

### Isotype

IgG

### Purification

Affinity purification

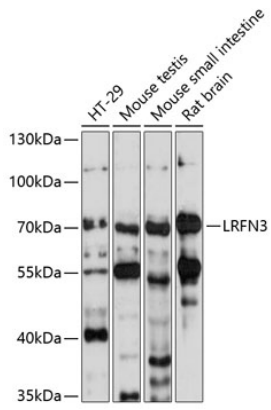
### Storage

Store at -20°C. Avoid freeze / thaw cycles.

Buffer: PBS with 0.01% thimerosal, 50% glycerol, pH7.3.

## Validation Data

---



Western blot analysis of various lysates using LRFN3 Rabbit pAb (A14927) at 1:1000 dilution.  
Secondary antibody: HRP Goat Anti-Rabbit IgG (H+L) (AS014) at 1:10000 dilution.  
Lysates/proteins: 25µg per lane.  
Blocking buffer: 3% nonfat dry milk in TBST.  
Detection: ECL Basic Kit (RM00020).  
Exposure time: 30s.