

# NTPCR Rabbit pAb

Catalog No.: A14944

## Basic Information

### Observed MW

21kDa

### Calculated MW

21kDa

### Category

Primary antibody

### Applications

ELISA, WB, IF/ICC

### Cross-Reactivity

Human, Mouse

## Background

The protein encoded by this gene is a non-specific nucleoside triphosphatase that is slow-acting in vitro. This gene is overexpressed in many tumor tissues, and while it is not essential for the cell, overexpression is cytotoxic. However, the cytotoxicity is not related to its triphosphatase activity.

## Recommended Dilutions

WB 1:500 - 1:2000

IF/ICC 1:50 - 1:200

## Immunogen Information

### Gene ID

84284

### Swiss Prot

Q9BSD7

### Immunogen

Recombinant fusion protein containing a sequence corresponding to amino acids 91-190 of human NTPCR (NP\_115700.1).

### Synonyms

THEP1; C1orf57; HCR-NTPase; NTPCR

## Contact

☎ | 400-999-6126

✉ | [cn.market@abclonal.com.cn](mailto:cn.market@abclonal.com.cn)

🌐 | [www.abclonal.com.cn](http://www.abclonal.com.cn)

## Product Information

### Source

Rabbit

### Isotype

IgG

### Purification

Affinity purification

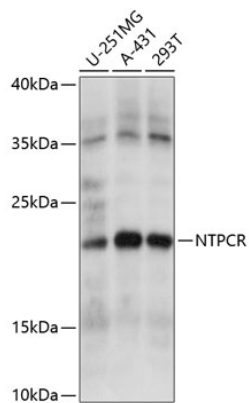
### Storage

Store at -20°C. Avoid freeze / thaw cycles.

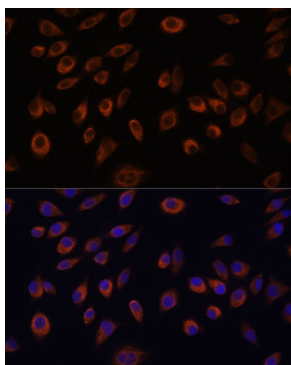
Buffer: PBS with 0.01% thimerosal, 50% glycerol, pH7.3.

## Validation Data

---



Western blot analysis of various lysates using NTPCR Rabbit pAb (A14944) at 1:1000 dilution. Secondary antibody: HRP Goat Anti-Rabbit IgG (H+L) (AS014) at 1:10000 dilution. Lysates/proteins: 25µg per lane. Blocking buffer: 3% nonfat dry milk in TBST. Detection: ECL Basic Kit (RM00020). Exposure time: 10s.



Immunofluorescence analysis of L929 cells using NTPCR Rabbit pAb (A14944) at dilution of 1:100. Secondary antibody: Cy3 Goat Anti-Rabbit IgG (H+L) (AS007) at 1:500 dilution. Blue: DAPI for nuclear staining.