

# FCHO2 Rabbit pAb

Catalog No.: A14956 **1 Publications**

## Basic Information

### Observed MW

89kDa

### Calculated MW

89kDa

### Category

Primary antibody

### Applications

ELISA, WB

### Cross-Reactivity

Human, Mouse

## Background

Enables identical protein binding activity. Involved in clathrin coat assembly and clathrin-dependent endocytosis. Located in clathrin-coated pit and clathrin-coated vesicle.

## Recommended Dilutions

WB 1:500 - 1:2000

## Immunogen Information

### Gene ID

115548

### Swiss Prot

Q0JRZ9

### Immunogen

Recombinant fusion protein containing a sequence corresponding to amino acids 1-300 of human FCHO2 (NP\_620137.2).

### Synonyms

FCHO2

## Contact

 | 400-999-6126

 | [cn.market@abclonal.com.cn](mailto:cn.market@abclonal.com.cn)

 | [www.abclonal.com.cn](http://www.abclonal.com.cn)

## Product Information

### Source

Rabbit

### Isotype

IgG

### Purification

Affinity purification

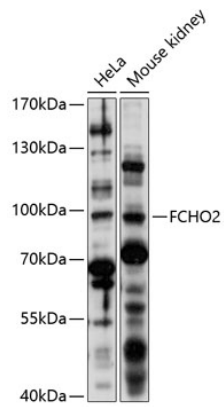
### Storage

Store at -20°C. Avoid freeze / thaw cycles.

Buffer: PBS with 0.01% thimerosal, 50% glycerol, pH7.3.

## Validation Data

---



Western blot analysis of various lysates using FCHO2 Rabbit pAb (A14956) at 1:1000 dilution.  
Secondary antibody: HRP Goat Anti-Rabbit IgG (H+L) (AS014) at 1:10000 dilution.  
Lysates/proteins: 25 $\mu$ g per lane.  
Blocking buffer: 3% nonfat dry milk in TBST.  
Detection: ECL Basic Kit (RM00020).  
Exposure time: 10s.