

NR2C2AP Rabbit pAb

Catalog No.: A14960

Basic Information

Observed MW

15kDa

Calculated MW

16kDa

Category

Primary antibody

Applications

WB,ELISA

Cross-Reactivity

Human

Background

Located in nucleoplasm.

Recommended Dilutions

WB 1:500 - 1:1000

ELISA Recommended starting concentration is 1 µg/mL. Please optimize the concentration based on your specific assay requirements.

Immunogen Information

Gene ID

126382

Swiss Prot

Q86WQ0

Immunogen

Recombinant protein (or fragment). This information is considered to be commercially sensitive.

Synonyms

TRA16; NR2C2AP

Contact

☎ | 400-999-6126

✉ | cn.market@abclonal.com.cn

🌐 | www.abclonal.com.cn

Product Information

Source

Rabbit

Isotype

IgG

Purification

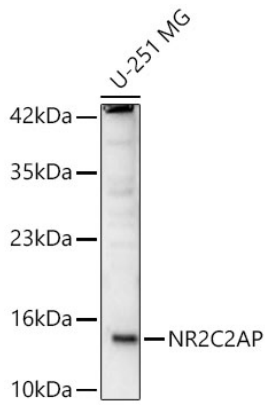
Affinity purification

Storage

Store at -20°C. Avoid freeze / thaw cycles.

Buffer: PBS with 0.01% thimerosal, 50% glycerol, pH7.3.

Validation Data



Western blot analysis of lysates from U-251 MG cells using NR2C2AP Rabbit pAb (A14960) at 1:1000 dilution.

Secondary antibody: HRP-conjugated Goat anti-Rabbit IgG (H+L) (AS014) at 1:10000 dilution.

Lysates/proteins: 25 µg per lane.

Blocking buffer: 3% nonfat dry milk in TBST.

Detection: ECL Basic Kit (RM00020).

Exposure time: 90s.