

MDGA2 Rabbit pAb

Catalog No.: A14969

Basic Information

Observed MW

107kDa

Calculated MW

107kDa

Category

Primary antibody

Applications

ELISA, WB

Cross-Reactivity

Human, Mouse, Rat

Background

Predicted to be involved in regulation of presynapse assembly; regulation of synaptic membrane adhesion; and spinal cord motor neuron differentiation. Predicted to act upstream of or within neuron migration and pattern specification process. Predicted to be located in extracellular region and plasma membrane. Predicted to be active in GABA-ergic synapse and glutamatergic synapse.

Recommended Dilutions

WB 1:500 - 1:2000

Immunogen Information

Gene ID

161357

Swiss Prot

Q7Z553

Immunogen

Recombinant fusion protein containing a sequence corresponding to amino acids 620-820 of human MDGA2 (NP_001106970.3).

Synonyms

MAMDC1; c14_5286; MDGA2

Contact

☎ | 400-999-6126

✉ | cn.market@abclonal.com.cn

🌐 | www.abclonal.com.cn

Product Information

Source

Rabbit

Isotype

IgG

Purification

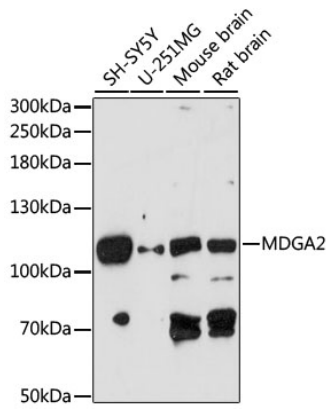
Affinity purification

Storage

Store at -20°C. Avoid freeze / thaw cycles.

Buffer: PBS with 0.01% thimerosal, 50% glycerol, pH7.3.

Validation Data



Western blot analysis of various lysates using MDGA2 Rabbit pAb (A14969) at 1:1000 dilution.
Secondary antibody: HRP Goat Anti-Rabbit IgG (H+L) (AS014) at 1:10000 dilution.
Lysates/proteins: 25µg per lane.
Blocking buffer: 3% nonfat dry milk in TBST.
Detection: ECL Basic Kit (RM00020).
Exposure time: 90s.